

Panasonic

Large-Venue



* "i Light Marina Bay 2014" Singapore

Installation



* "Australian Museum" Sydney

Portable

PROJECTOR LINEUP

May 2014



Short Throw



Home Cinema

Large-Venue

Rental/Staging Auditorium Museum/Exhibition Control Room Digital Signage Houses of Worship/Church



3-Chip DLP™

PT-DZ21K

 20,000 lm | WUXGA

- Geometric Adjustment
- Lens Memory
- Eco Filter

PT-DS20K

 20,000 lm | SXGA+

- Geometric Adjustment
- Lens Memory
- Eco Filter

PT-DW17K

 17,000 lm | WXGA

- Lens Memory
- Eco Filter

PT-DZ16K **NEW**

 16,000 lm | Full HD

- Geometric Adjustment
- Lens Memory
- Eco Filter



3-Chip DLP™

PT-DZ13K

 12,000 lm | WUXGA

- Geometric Adjustment
- Lens Memory
- Eco Filter

PT-DS12K

 12,000 lm | SXGA+

- Geometric Adjustment
- Lens Memory
- Eco Filter

PT-DW11K

 11,000 lm | WXGA

- Lens Memory
- Eco Filter

PT-DZ10K

 10,600 lm | WUXGA

- Geometric Adjustment
- Lens Memory
- Eco Filter

Rental/Staging Auditorium Houses of Worship/Church



LCD

PT-EX16K

 16,000 lm | XGA

- Pure Color Control
- Corner Keystone



LCD

PT-EX12K

 13,000 lm | XGA

- Pure Color Control
- Corner Keystone
- Eco Filter

Installation

Museum/Exhibition Simulation Control Room Digital Signage Seminar Room/Lecture Room



1-Chip DLP™

PT-DZ870
PT-DZ870L^{*1}

 8,500 lm | WUXGA

- Dynamic RGB Booster
- Dust Resistant Optics
- Geometric Adjustment

PT-DW830
PT-DW830L^{*1}

 8,500 lm | WXGA

- Dynamic RGB Booster
- Dust Resistant Optics

PT-DX100
PT-DX100L^{*1}

 10,000 lm | XGA

- Dynamic RGB Booster
- Dust Resistant Optics



1-Chip DLP™

PT-DZ770K
PT-DZ770LK^{*1}

 7,000 lm | WUXGA

- RGB Booster
- Eco Filter



1-Chip DLP™

PT-DW740S
PT-DW740LS^{*1}

 7,000 lm | WXGA

- RGB Booster
- Eco Filter

PT-DX810S
PT-DX810LS^{*1}

 8,200 lm | XGA

- RGB Booster
- Eco Filter



1-Chip DLP™

PT-DZ680
PT-DZ680L^{*1}

 6,000 lm | WUXGA

- [Available in silver/black cabinet]
- RGB Booster
 - Eco Filter

PT-DW640
PT-DW640L^{*1}

 6,000 lm | WXGA

- [Available in silver/black cabinet]
- RGB Booster
 - Eco Filter

PT-DX610
PT-DX610L^{*1}

 6,500 lm | XGA

- [Available in silver/black cabinet]
- RGB Booster
 - Eco Filter

Seminar Room/Lecture Room Boardroom



1-Chip DLP™

PT-DZ570
 option^{*2}

 4,000 lm | WUXGA

- RGB Booster
- 2x Zoom lens

PT-DW530
 option^{*2}

 4,000 lm | WXGA

- RGB Booster
- 2x Zoom lens

PT-DX500
 option^{*2}

 4,500 lm | XGA

- RGB Booster
- 2x Zoom lens

Museum/Exhibition Control Room Digital Signage

SOLID SHINE



1-Chip DLP™

PT-RZ475^{*3*}



3,000 lm Full HD

- Short throw lens mounted
- No lamp/filter replacement
- DIGITAL LINK-ready
- Portrait mode capability

PT-RZ470



3,500 lm Full HD

- [Available in white/black cabinet]
- No lamp/filter replacement
 - DIGITAL LINK-ready
 - Portrait mode capability

PT-RW430



3,500 lm WXGA

- [Available in white/black cabinet]
- No lamp/filter replacement
 - DIGITAL LINK-ready
 - Portrait mode capability

Seminar Room/Lecture Room Meeting Room

SOLID SHINE



1-Chip DLP™

PT-RZ370



3,500 lm Full HD

- No lamp/filter replacement
- DIGITAL LINK-ready

PT-RW330



3,500 lm WXGA

- No lamp/filter replacement
- DIGITAL LINK-ready

Seminar Room/Lecture Room Boardroom



LCD

PT-EZ770Z
PT-EZ770ZL^{*1}



6,500 lm WUXGA

- DIGITAL LINK-ready
- Daylight View Basic
- Eco Filter

PT-EW730Z
PT-EW730ZL^{*1}



7,000 lm WXGA

- DIGITAL LINK-ready
- Daylight View Basic
- Eco Filter

PT-EX800Z
PT-EX800ZL^{*1}



7,500 lm XGA

- DIGITAL LINK-ready
- Daylight View Basic
- Eco Filter



LCD

PT-EZ580
PT-EZ580L^{*1}



5,400 lm WUXGA

- DIGITAL LINK-ready
- Daylight View Basic
- Eco Filter

PT-EW640
PT-EW640L^{*1}



5,800 lm WXGA

- DIGITAL LINK-ready
- Daylight View Basic
- Eco Filter

PT-EW540
PT-EW540L^{*1}



5,000 lm WXGA

- Daylight View Basic
- Eco Filter

PT-EX610
PT-EX610L^{*1}



6,200 lm XGA

- DIGITAL LINK-ready
- Daylight View Basic
- Eco Filter

PT-EX510
PT-EX510L^{*1}



5,300 lm XGA

- Daylight View Basic
- Eco Filter

Seminar Room/Lecture Room Boardroom Meeting room



LCD

PT-FW430



3,500 lm WXGA

- 2x Zoom lens
- Eco Filter

PT-FX400



4,000 lm XGA

- 2x Zoom lens
- Eco Filter



LCD

PT-LZ370



3,000 lm Full HD

- Full HD (1,920 x 1,080)
- 2x Zoom lens

*1: Lens-less model. *2: To operate wireless projection, the optional wireless module ET-WM200 is required.
*3: The availability varies depending on the country. *4: With no lens shift lever.

Portable

Medium to Small Classrooms Meeting Room



LCD

PT-VW431D

DIGITAL LINK+ WIRELESS WIDE

4,300 lm WXGA

- DIGITAL LINK-ready
- 1.6x Zoom lens
- Vertical lens shift

PT-VW440¹

WIRELESS WIDE

4,800 lm WXGA

- 1.6x Zoom lens
- Vertical lens shift

PT-VW435N

WIRELESS WIDE

4,300 lm WXGA

- 1.6x Zoom lens
- Vertical lens shift

PT-VX510¹

WIRELESS

5,500 lm XGA

- 1.6x Zoom lens
- Vertical lens shift

PT-VX505N

WIRELESS

5,000 lm XGA

- 1.6x Zoom lens
- Vertical lens shift



LCD

PT-VW345NZ

WIRELESS WIDE

3,700 lm WXGA

- Miracast™ compatible
- 1.6x Zoom lens
- Easy setting function

PT-VW340Z

WIRELESS WIDE

3,700 lm WXGA

- 1.6x Zoom lens
- Built-in 10 W speaker

PT-VX415NZ

WIRELESS

4,200 lm XGA

- Miracast™ compatible
- 1.6x Zoom lens
- Easy setting function

PT-VX410Z

WIRELESS

4,200 lm XGA

- 1.6x Zoom lens
- Built-in 10 W speaker



LCD

PT-VX42Z¹

WIRELESS

4,000 lm XGA

- 1.2x Zoom lens
- Built-in 10 W speaker

Small Classroom Meeting Room

NEW



LCD

PT-LW330

WIRELESS WIDE

3,300 lm WXGA

- Daylight View Lite
- Built-in 10 W speaker
- HDMI

PT-LW280

WIRELESS WIDE

2,800 lm WXGA

- Daylight View Lite
- Built-in 10 W speaker
- HDMI

PT-LB360

WIRELESS

3,700 lm XGA

- Daylight View Lite
- Built-in 10 W speaker
- HDMI

PT-LB330

WIRELESS

3,300 lm XGA

- Daylight View Lite
- Built-in 10 W speaker
- HDMI

PT-LB300

WIRELESS

3,100 lm XGA

- Daylight View Lite
- Built-in 2 W speaker
- HDMI

PT-LB280

WIRELESS

2,800 lm XGA

- Daylight View Lite
- Built-in 2 W speaker
- HDMI



LCD

PT-LW25H

WIRELESS WIDE

2,500 lm WXGA

- Lightweight body

PT-LX30H

WIRELESS

3,000 lm XGA

- Lightweight body

PT-LX26H

WIRELESS

2,600 lm XGA

- Lightweight body

Short Throw

Small Classroom

Meeting Room

Museum/Exhibition



1-Chip DLP™

PT-CW331R



3,100 lm WXGA

- Interactive
- 3D ready
- Built-in 10 W speaker

PT-CW241R



2,600 lm WXGA

- Interactive
- 3D ready
- Built-in 10 W speaker

PT-CX301R



3,100 lm XGA

- Interactive
- 3D ready
- Built-in 10 W speaker



1-Chip DLP™

PT-CW330



3,100 lm WXGA

- 3D ready
- Built-in 10 W speaker
- HDMI

PT-CW240



2,600 lm WXGA

- 3D ready
- Built-in 10 W speaker
- HDMI

PT-CX300



3,100 lm XGA

- 3D ready
- Built-in 10 W speaker
- HDMI

Small Classroom

Meeting Room

NEW



* Featured image: PT-TW341R

LCD

PT-TW341R



3,200 lm WXGA

- Daylight View Lite
- Built-in 10 W speaker
- HDMI
- Interactive

PT-TW340



3,200 lm WXGA

- Daylight View Lite
- Built-in 10 W speaker
- HDMI

PT-TW250



3,100 lm WXGA

- Daylight View Lite
- Built-in 10 W speaker
- HDMI

PT-TX400



3,500 lm XGA

- Daylight View Lite
- Built-in 10 W speaker
- HDMI

PT-TX310



3,200 lm XGA

- Daylight View Lite
- Built-in 10 W speaker
- HDMI

PT-TX210



2,800 lm XGA

- Daylight View Lite
- Built-in 2 W speaker
- HDMI

Home Cinema

Home Theater Room

Living Room



LCD

PT-AE8000 PT-AT6000



2,400 lm

- Full HD (1,920 x 1,080)
- Intelligent Lens Memory
- 3D Motion Remaster



LCD

PT-AR100 PT-AH1000



2,800 lm

- Full HD (1,920 x 1,080)
- Light Harmonizer 3

Please check with your dealer regarding product availability in your country.

Turnkey Solution for Multi-Window Presentations



Optional Accessory

Multi Window Processor

ET-MWP100G (optional)

The ET-MWP100G Multi Window Processor makes it possible to quickly and efficiently combine multiple displays and projectors into a video wall or a multi vision system.

All-in-One Connectivity



Optional Accessory

Digital Interface Box

ET-YFB100G (optional)

Equipped with a DIGITAL LINK output terminal. Allows transmission of HDMI, uncompressed HD digital video, audio and control signals (Ethernet, RS-232C) for up to 100 meters (328 feet) through a single CAT5e (STP) cable or higher.

*1: The availability varies depending on the country. *2: When the optional DIGITAL LINK board is mounted.

Large-Venue

PT-DZ21K



3-Chip DLP™ Projector | WUXGA | WIRED LAN | *4 | Portrait

20,000 lm | WUXGA

* Lens sold separately.

PT-DS20K



3-Chip DLP™ Projector | SXGA+ | WIRED LAN | *4 | Portrait

20,000 lm | SXGA+

* Lens sold separately.

Optical	Panel type	24.4 mm (0.96 inches) DLP™ chip x 3	24.1 mm (0.95 inches) DLP™ chip x 3	
	Aspect ratio	16:10	4:3	
Interface	Lamp	465 W UHM x 4	465 W UHM x 4	
	Brightness	20,000 lm	20,000 lm	
	Contrast (full on/full off)	10,000:1	10,000:1	
	Resolution native/maximum*1	WUXGA (1,920 x 1,200)	SXGA+ (1,400 x 1,050)/WUXGA (1,920 x 1,200)	
	Screen size (diagonal)*2	1.78-25.4 m (70-1,000 inches)*5	1.78-25.4 m (70-1,000 inches)*5	
	Lens shift	Vertical: ±5%*, horizontal: ±20%*6 (powered)	Vertical: ±50%*11, horizontal: ±30%*11 (powered)	
General	Terminals	SDI in [BNC x 2 (3G/HD/SD-SDI x 1, HD/SD-SDI x 1)] 3D SYNC in/out [BNC x 1 (3D timing signal)] 3D SYNC out [BNC x 1 (3D timing signal)] DVI-D in [DVI-D 24-pin x 1 (DVI-D x 1 (HDCP compatible))] HDMI in [HDMI 19-pin x 1 (HDCP compatible)] RGB 1 in [BNC x 5 (RGB/Y/PaPr/YCaCr x 1)] RGB 2 in [D-sub HD 15-pin x 1 (RGB/Y/PaPr/YCaCr x 1)] Composite video in [BNC x 1] Serial in [D-sub 9-pin x 1 (RS-232C)] Serial out [D-sub 9-pin x 1 (RS-232C)] Remote 1 in/out [M3 x 2 (in x 1, out x 1)] Remote 2 in [D-sub 9-pin x 1] LAN [RJ-45 x 1 (10Base-T/100Base-TX)]	SDI in [BNC x 2 (3G/HD/SD-SDI x 1, HD/SD-SDI x 1)] 3D SYNC in/out [BNC x 1 (3D timing signal)] 3D SYNC out [BNC x 1 (3D timing signal)] DVI-D in [DVI-D 24-pin x 1 (DVI-D x 1 (HDCP compatible))] HDMI in [HDMI 19-pin x 1 (HDCP compatible)] RGB 1 in [BNC x 5 (RGB/Y/PaPr/YCaCr x 1)] RGB 2 in [D-sub HD 15-pin x 1 (RGB/Y/PaPr/YCaCr x 1)] Composite video in [BNC x 1] Serial in [D-sub 9-pin x 1 (RS-232C)] Serial out [D-sub 9-pin x 1 (RS-232C)] Remote 1 in/out [M3 x 2 (in x 1, out x 1)] Remote 2 in [D-sub 9-pin x 1] LAN [RJ-45 x 1 (10Base-T/100Base-TX)]	
	Power supply	200-240 V AC, 12 A, 50/60 Hz	200-240 V AC, 12 A, 50/60 Hz	
	Power consumption	2,300 W	2,300 W	
	Dimensions (W x H x D)	620 x 291*7 x 800 mm*8 (24-7/16 x 11-15/32*7 x 31-1/2 inches)*8	620 x 291*7 x 800 mm*8 (24-7/16 x 11-15/32*7 x 31-1/2 inches)*8	
	Weight*3	Approx. 43 kg/94.8 lbs	Approx. 43 kg/94.8 lbs	
	Features	Filter	Eco Filter	Eco Filter
		Edge Blending	Yes	Yes
		Geometric Adjustment	Yes (Optional upgrade kit available)	Yes (Optional upgrade kit available)
		Multi-Unit Brightness Control	Yes	Yes
		Portrait mode	Yes*4	Yes*4
Daylight View		System Daylight View 2	System Daylight View 2	
Detail Clarity Processor		Detail Clarity Processor 3	Detail Clarity Processor 3	
DICOM Simulation Mode		Yes	Yes	
Accessory	P-in-P	Yes	Yes	
	Replacement lamp	ET-LAD510/ET-LAD510F (4 units) ET-LAD510P/ET-LAD510PF (for portrait mode)	ET-LAD510/ET-LAD510F (4 units) ET-LAD510P/ET-LAD510PF (for portrait mode)	
	Optional accessories	ET-PKD510H (High ceiling mount bracket) ET-PKD510S (Low ceiling mount bracket) ET-PFD510 (Frame) ET-EMF510 (Replacement filter unit) ET-SFR510 (Smoke cut filter) ET-UK20 (Upgrade kit with Geometry Manager Pro) ET-CUK10*9 (Auto Screen Adjustment Upgrade Kit)	ET-PKD510H (High ceiling mount bracket) ET-PKD510S (Low ceiling mount bracket) ET-PFD510 (Frame) ET-EMF510 (Replacement filter unit) ET-SFR510 (Smoke cut filter) ET-UK20 (Upgrade kit with Geometry Manager Pro) ET-CUK10*9 (Auto Screen Adjustment Upgrade Kit)	
	Optional lens	ET-D75LE6 (Zoom lens, 0.9-1.1:1) ET-D75LE10 (Zoom lens, 1.3-1.7:1) ET-D75LE20 (Zoom lens, 1.7-2.4:1) ET-D75LE30 (Zoom lens, 2.4-4.7:1) ET-D75LE40 (Zoom lens, 4.6-7.4:1) ET-D75LE8 (Zoom lens, 7.3-13.8:1) ET-D75LE50 (Fixed-focus lens, 0.7:1)	ET-D75LE6 (Zoom lens, 1.0-1.2:1) ET-D75LE10 (Zoom lens, 1.4-1.8:1) ET-D75LE20 (Zoom lens, 1.8-2.6:1) ET-D75LE30 (Zoom lens, 2.6-5.1:1) ET-D75LE40 (Zoom lens, 5.0-8.0:1) ET-D75LE8 (Zoom lens, 7.9-15.0:1) ET-D75LE50 (Fixed-focus lens, 0.8:1)	
Standard accessories	Power cord, wireless/wired remote control unit, batteries for remote control unit, CD-ROM*10	Power cord, wireless/wired remote control unit, batteries for remote control unit, CD-ROM*10		

*1: Input signals that exceed the native resolution will be converted to the native resolution. *2: The screen size is that of the original aspect ratio.

*3: Average value. Each product has an individual variable in weight. *4: Mounting the optional lamp unit for portrait mode and updating the projector's firmware to MAIN Ver. 2.00 or later are required. *5: 1.78-15.24 m (70-600 inches) with the ET-D75LE8. *6: Vertical ±4% and horizontal ±15% with the ET-D75LE6.

PT-DW17K



3-Chip DLP™ Projector **WIRED LAN** **Portait**^{*4}
 17,000 lm | WXGA

* Lens sold separately.

21.6 mm (0.85 inches) DLP™ chip x 3
 16:9
 465 W UHM x 4
 17,000 lm
 10,000:1
 WXGA (1,366 x 768)/WUXGA (1,920 x 1,200)
 1.78-25.4 m (70-1,000 inches)^{*5}
 Vertical: ±70%^{*12}, horizontal: ±30%^{*12} (powered)

DVI-D in [DVI-D 24-pin x 1 (DVI-D x 1 (HDCP compatible))]
 HDMI in [HDMI 19-pin x 1 (HDCP compatible)]
 RGB 1 in [BNC x 5 (RGB/YpPr/YcCr x 1)]
 RGB 2 in [D-sub HD 15-pin x 1 (RGB/YpPr/YcCr x 1)]
 Composite video in [BNC x 1]
 Serial in [D-sub 9-pin x 1 (RS-232C)]
 Serial out [D-sub 9-pin x 1 (RS-232C)]
 Remote 1 in/out [M3 x 2 (in x 1, out x 1)]
 Remote 2 in [D-sub 9-pin x 1]
 LAN [RJ-45 x 1 (10Base-T/100Base-TX)]

200-240 V AC, 12 A, 50/60 Hz

2,300 W
 620 x 291^{*7} x 800 mm^{*8}
 (24-7/16 x 11-15/32^{*7} x 31-1/2 inches)^{*8}
 Approx. 43 kg/94.8 lbs

Eco Filter
 Yes
 -
 Yes
 Yes^{*4}

System Daylight View 2
 Detail Clarity Processor 3
 Yes
 Yes

ET-LAD510/ET-LAD510F (4 units)
 ET-LAD510P/ET-LAD510PF (for portrait mode)
 ET-PKD510H (High ceiling mount bracket)
 ET-PKD510S (Low ceiling mount bracket)
 ET-PFD510 (Frame)
 ET-EMF510 (Replacement filter unit)
 ET-SFR510 (Smoke cut filter)

ET-D75LE6 (Zoom lens, 1.0-1.2:1)
 ET-D75LE10 (Zoom lens, 1.4-1.9:1)
 ET-D75LE20 (Zoom lens, 1.8-2.7:1)
 ET-D75LE30 (Zoom lens, 2.7-5.2:1)
 ET-D75LE40 (Zoom lens, 5.1-8.2:1)
 ET-D75LE8 (Zoom lens, 8.2-15.4:1)
 ET-D75LE50 (Fixed-focus lens, 0.8:1)

Power cord, wireless/wired remote control unit, batteries for remote control unit, CD-ROM^{*10}

PT-DZ16K

NEW



3-Chip DLP™ Projector **WIRED LAN**
 16,000 lm | Full HD

* Lens sold separately.

24.1 mm (0.95 inches) DLP™ chip x 3
 16:9
 420 W UHM x 4
 16,000 lm
 10,000:1
 Full HD (1,920 x 1,080)/WUXGA (1,920 x 1,200)
 1.78-25.4 m (70-1,000 inches)^{*5}
 Vertical: ±60%^{*13}, horizontal: ±20%^{*13} (powered)

SDI in [BNC x 1 (3G/HD/SD-SDI x 1)]
 DVI-D in [DVI-D 24-pin x 1 (DVI-D x 1 (HDCP compatible))]
 HDMI in [HDMI 19-pin x 1 (HDCP compatible)]
 RGB 1 in [BNC x 5 (RGB/YpPr/YcCr x 1)]
 RGB 2 in [D-sub HD 15-pin x 1 (RGB/YpPr/YcCr x 1)]
 Composite video in [BNC x 1]
 Serial in [D-sub 9-pin x 1 (RS-232C)]
 Serial out [D-sub 9-pin x 1 (RS-232C)]
 Remote 1 in/out [M3 x 2 (in x 1, out x 1)]
 Remote 2 in [D-sub 9-pin x 1]
 LAN [RJ-45 x 1 (10Base-T/100Base-TX)]

200-240 V AC, 11.5 A, 50/60 Hz

2,150 W
 620 x 291^{*7} x 800 mm^{*8}
 (24-7/16 x 11-15/32^{*7} x 31-1/2 inches)^{*8}
 Approx. 43 kg/94.8 lbs

Eco Filter
 Yes
 Yes
 Yes
 -

System Daylight View 2
 Detail Clarity Processor 3
 Yes
 Yes

ET-LAD510/ET-LAD510F (4 units)
 ET-LAD510P/ET-LAD510PF (for portrait mode)
 ET-PKD510H (High ceiling mount bracket)
 ET-PKD510S (Low ceiling mount bracket)
 ET-PFD510 (Frame)
 ET-EMF510 (Replacement filter unit)
 ET-SFR510 (Smoke cut filter)

ET-D75LE6 (Zoom lens, 0.9-1.1:1)
 ET-D75LE10 (Zoom lens, 1.3-1.7:1)
 ET-D75LE20 (Zoom lens, 1.7-2.4:1)
 ET-D75LE30 (Zoom lens, 2.4-4.7:1)
 ET-D75LE40 (Zoom lens, 4.6-7.4:1)
 ET-D75LE8 (Zoom lens, 7.3-13.8:1)
 ET-D75LE50 (Fixed-focus lens, 0.7:1)

Power cord, wireless/wired remote control unit, batteries for remote control unit, CD-ROM^{*10}

PT-DZ13K



3-Chip DLP™ Projector **WIRED LAN** **Portait**^{*4}
 12,000 lm | WUXGA

* Lens sold separately.

24.4 mm (0.96 inches) DLP™ chip x 3
 16:10
 380 W UHM x 2
 12,000 lm
 10,000:1
 WUXGA (1,920 x 1,200)
 1.78-25.4 m (70-1,000 inches)^{*5}
 Vertical: ±55%^{*6}, horizontal: ±20%^{*6} (powered)

SDI in [BNC x 2 (3G/HD/SD-SDI x 1, HD/SD-SDI x 1)]
 3D SYNC in/out [BNC x 1 (3D timing signal)]
 3D SYNC out [BNC x 1 (3D timing signal)]
 DVI-D in [DVI-D 24-pin x 1 (DVI-D x 1 (HDCP compatible))]
 HDMI in [HDMI 19-pin x 1 (HDCP compatible)]
 RGB 1 in [BNC x 5 (RGB/YpPr/YcCr x 1)]
 RGB 2 in [D-sub HD 15-pin x 1 (RGB/YpPr/YcCr x 1)]
 Composite video in [BNC x 1]
 Serial in [D-sub 9-pin x 1 (RS-232C)]
 Serial out [D-sub 9-pin x 1 (RS-232C)]
 Remote 1 in/out [M3 x 2 (in x 1, out x 1)]
 Remote 2 in [D-sub 9-pin x 1]
 LAN [RJ-45 x 1 (10Base-T/100Base-TX)]

120 V AC, 9.3 A, 50/60 Hz
 220-240 V AC, 5 A, 50/60 Hz

1,000 W (120 V AC)/970 W (220-240 V AC)
 530 x 200^{*7} x 548.5 mm^{*8}
 (20-7/8 x 7-7/8^{*7} x 21-19/32 inches)^{*8}
 Approx. 24 kg/52.9 lbs

Eco Filter
 Yes
 Yes (Optional upgrade kit available)
 Yes
 Yes^{*4}

System Daylight View 2
 Detail Clarity Processor 3
 Yes
 Yes

ET-LAD310A/ET-LAD310AW (2 units)
 ET-LAD320P/ET-LAD320PW (for portrait mode)
 ET-PKD310H (High ceiling mount bracket)
 ET-PKD310S (Low ceiling mount bracket)
 ET-PAD310 (Attachment for ceiling mount bracket)
 ET-PFD310 (Frame)
 ET-EMF320 (Replacement filter unit)
 ET-SFD320 (Smoke cut filter)

ET-D75LE6 (Zoom lens, 0.9-1.1:1)
 ET-D75LE10 (Zoom lens, 1.3-1.7:1)
 ET-D75LE20 (Zoom lens, 1.7-2.4:1)
 ET-D75LE30 (Zoom lens, 2.4-4.7:1)
 ET-D75LE40 (Zoom lens, 4.6-7.4:1)
 ET-D75LE8 (Zoom lens, 7.3-13.8:1)
 ET-D75LE50 (Fixed-focus lens, 0.7:1)
 ET-D75MCI (Lens motor cover)

Power cord, wireless/wired remote control unit, batteries for remote control unit, CD-ROM^{*10}

*7: Height; with legs at shortest position. *8: Depth; lens not included. *9: Available for use worldwide except in the United States.

*10: CD-ROM includes Logo Transfer Software and Multi Projector Monitoring and Control Software. *11: Vertical ±40% and horizontal ±20% with the ET-D75LE6.

*12: Vertical ±60% and horizontal ±20% with the ET-D75LE6. *13: Vertical ±50% and horizontal ±15% with the ET-D75LE6.

Large-Venue

PT-DS12K



3-Chip DLP™ Projector | WIRED LAN | *4
12,000 lm | SXGA+ | Portrait

* Lens sold separately.

PT-DW11K



3-Chip DLP™ Projector | WIRED LAN | *4
11,000 lm | WXGA | Portrait

* Lens sold separately.

Optical	Panel type	24.1 mm (0.95 inches) DLP™ chip x 3	21.6 mm (0.85 inches) DLP™ chip x 3	
	Aspect ratio	4:3	16:9	
Interface	Lamp	380 W UHM x 2	380 W UHM x 2	
	Brightness	12,000 lm	11,000 lm	
	Contrast (full on/full off)	10,000:1	10,000:1	
	Resolution native/maximum*1	SXGA+ (1,400 x 1,050)/WUXGA (1,920 x 1,200)	WXGA (1,366 x 768)/WUXGA (1,920 x 1,200)	
	Screen size (diagonal)*2	1.78-25.4 m (70-1,000 inches)*5	1.78-25.4 m (70-1,000 inches)*5	
	Lens shift	Vertical: ±50 %*6, horizontal: ±30 %*6 [powered]	Vertical: ±70 %*10, horizontal: ±30 %*10 [powered]	
General	Terminals	SDI in [BNC x 2 (3G/HD/SD-SDI x 1, HD/SD-SDI x 1)] 3D SYNC in/out [BNC x 1 (3D timing signal)] 3D SYNC out [BNC x 1 (3D timing signal)] DVI-D in [DVI-D 24-pin x 1 (DVI-D x 1 (HDCP compatible))] HDMI in [HDMI 19-pin x 1 (HDCP compatible)] RGB 1 in [BNC x 5 (RGB/YPbPr/YCbCr x 1)] RGB 2 in [D-sub HD 15-pin x 1 (RGB/YPbPr/YCbCr x 1)] Composite video in [BNC x 1] Serial in [D-sub 9-pin x 1 (RS-232C)] Serial out [D-sub 9-pin x 1 (RS-232C)] Remote 1 in/out [M3 x 2 (in x 1, out x 1)] Remote 2 in [D-sub 9-pin x 1] LAN [RJ-45 x 1 (10Base-T/100Base-TX)]	3D SYNC in/out [BNC x 1 (3D timing signal)] 3D SYNC out [BNC x 1 (3D timing signal)] DVI-D in [DVI-D 24-pin x 1 (DVI-D x 1 (HDCP compatible))] HDMI in [HDMI 19-pin x 1 (HDCP compatible)] RGB 1 in [BNC x 5 (RGB/YPbPr/YCbCr x 1)] RGB 2 in [D-sub HD 15-pin x 1 (RGB/YPbPr/YCbCr x 1)] Composite video in [BNC x 1] Serial in [D-sub 9-pin x 1 (RS-232C)] Serial out [D-sub 9-pin x 1 (RS-232C)] Remote 1 in/out [M3 x 2 (in x 1, out x 1)] Remote 2 in [D-sub 9-pin x 1] LAN [RJ-45 x 1 (10Base-T/100Base-TX)]	
	Power supply	120 V AC, 9.1 A, 50/60 Hz 220-240 V AC, 4.8 A, 50/60 Hz	120 V AC, 9.1 A, 50/60 Hz 220-240 V AC, 4.8 A, 50/60 Hz	
	Power consumption	980 W (120 V AC)/950 W (220-240 V AC)	980 W (120 V AC)/950 W (220-240 V AC)	
	Dimensions (W x H x D)	530 x 200*7 x 548.5 mm*8 (20-7/8 x 7-7/8*7 x 21-19/32 inches)*8	530 x 200*7 x 548.5 mm*8 (20-7/8 x 7-7/8*7 x 21-19/32 inches)*8	
	Weight*3	Approx. 24 kg/52.9 lbs	Approx. 24 kg/52.9 lbs	
	Features	Filter	Eco Filter	Eco Filter
		Edge Blending	Yes	Yes
		Geometric Adjustment	Yes (Optional upgrade kit available)	-
		Multi-Unit Brightness Control	Yes	Yes
		Portrait mode	Yes*4	Yes*4
		Daylight View	System Daylight View 2	System Daylight View 2
		Detail Clarity Processor	Detail Clarity Processor 3	Detail Clarity Processor 3
DICOM Simulation Mode		Yes	Yes	
Accessory	P-in-P	Yes	Yes	
	Replacement lamp	ET-LAD310A/ET-LAD310AW (2 units) ET-LAD320P/ET-LAD320PW (for portrait mode)	ET-LAD310A/ET-LAD310AW (2 units) ET-LAD320P/ET-LAD320PW (for portrait mode)	
	Optional accessories	ET-PKD310H (High ceiling mount bracket) ET-PKD310S (Low ceiling mount bracket) ET-PAD310 (Attachment for ceiling mount bracket) ET-PFD310 (Frame) ET-EMF320 (Replacement filter unit) ET-SFD320 (Smoke cut filter) ET-UK20 (Upgrade kit with Geometry Manager Pro) ET-CUK10*9 (Auto Screen Adjustment Upgrade Kit)	ET-PKD310H (High ceiling mount bracket) ET-PKD310S (Low ceiling mount bracket) ET-PAD310 (Attachment for ceiling mount bracket) ET-PFD310 (Frame) ET-EMF320 (Replacement filter unit) ET-SFD320 (Smoke cut filter)	
	Optional lens	ET-D75LE6 (Zoom lens, 1.0-1.2:1) ET-D75LE10 (Zoom lens, 1.4-1.8:1) ET-D75LE20 (Zoom lens, 1.8-2.6:1) ET-D75LE30 (Zoom lens, 2.6-5.1:1) ET-D75LE40 (Zoom lens, 5.0-8.0:1) ET-D75LE8 (Zoom lens, 7.9-15.0:1) ET-D75LE50 (Fixed-focus lens, 0.8:1) ET-D75MC1 (Lens motor cover)	ET-D75LE6 (Zoom lens, 1.0-1.2:1) ET-D75LE10 (Zoom lens, 1.4-1.9:1) ET-D75LE20 (Zoom lens, 1.8-2.7:1) ET-D75LE30 (Zoom lens, 2.7-5.2:1) ET-D75LE40 (Zoom lens, 5.1-8.2:1) ET-D75LE8 (Zoom lens, 8.2-15.4:1) ET-D75LE50 (Fixed-focus lens, 0.8:1) ET-D75MC1 (Lens motor cover)	
	Standard accessories	Power cord, wireless/wired remote control unit, batteries for remote control unit, software CD-ROM (Logo Transfer Software, Multi Projector Monitoring and Control Software)	Power cord, wireless/wired remote control unit, batteries for remote control unit, software CD-ROM (Logo Transfer Software, Multi Projector Monitoring and Control Software)	

*1: Input signals that exceed the native resolution will be converted to the native resolution. *2: The screen size is that of the original aspect ratio. *3: Average value. Each product has an individual variable in weight. *4: Mounting the optional lamp unit for portrait mode and updating the projector's firmware to MAIN Ver. 2.00 or later are required. *5: 1.78-15.24 m (70-600 inches) with the ET-D75LE8. *6: Vertical ±40 % and horizontal ±20 % with the ET-D75LE6. *7: Height: with legs at shortest position.

PT-DZ10K



3-Chip DLP™ Projector **WIRED LAN** **Portraйт** ^{*4}

10,600 lm WUXGA

* Lens sold separately.

PT-EX16K



LCD Projector **WIRED LAN** **Pure Color Control**

16,000 lm XGA

* Lens sold separately.

PT-EX12K



LCD Projector **WIRED LAN** **Pure Color Control**

13,000 lm XGA

* Lens sold separately.

24.4 mm (0.96 inches) DLP™ chip x 3 16:10 355 W UHM x 2 10,600 lm 10,000:1 WUXGA (1,920 x 1,200) 1.78-25.4 m (70-1,000 inches)*5 Vertical: ±5%*11, horizontal: ±20%*11 [powered]	46 mm (1.8 inches) LCD x 3 4:3 380 W UHM x 4 16,000 lm 2,500:1 XGA (1,024 x 768)/WUXGA (1,920 x 1,200) 1.02-15.24 m (40-600 inches)*12 Vertical: ±39%*13, horizontal: ±10%*13 [powered]	46 mm (1.8 inches) LCD x 3 4:3 380 W UHM x 2 13,000 lm 4,000:1 XGA (1,024 x 768)/WUXGA (1,920 x 1,200) 1.02-15.24 m (40-600 inches)*12 Vertical: ±39%*13, horizontal: ±10%*13 [powered]
SDI in [BNC x 1 (3G/HD/SD-SDI x 1)] DVI-D in [DVI-D 24-pin x 1 (DVI-D x 1 (HDCP compatible))] HDMI in [HDMI 19-pin x 1 (HDCP compatible)] RGB 1 in [BNC x 5 (RGB/YpPr/YCbCr x 1)] RGB 2 in [D-sub HD 15-pin x 1 (RGB/YpPr/YCbCr x 1)] Composite video in [BNC x 1] Serial in [D-sub 9-pin x 1 (RS-232C)] Serial out [D-sub 9-pin x 1 (RS-232C)] Remote 1 in/out [M3 x 2 (in x 1, out x 1)] Remote 2 in [D-sub 9-pin x 1] LAN [RJ-45 x 1 (10Base-T/100Base-TX)]	DVI-D in [DVI-D 24-pin x 1 (DVI-D x 1 (HDCP compatible))] HDMI in [HDMI 19-pin x 1 (HDCP compatible)] RGB in [D-sub HD 15-pin x 1 (RGB x 1)] RGB in [BNC x 5 (RGB/YpPr/YCbCr x 1)] S-Video in [Mini-DIN 4-pin x 1] Serial in [D-sub 9-pin x 1 (RS-232C x 1)] Serial out [D-sub 9-pin x 1 (RS-232C x 1)] Remote 1 in [M3 x 1] LAN [RJ-45 x 1 (10Base-T/100Base-TX)] USB [USB type-B x 1] Optional board slot [Slot x 2]	DVI-D in [DVI-D 24-pin x 1 (DVI-D x 1 (HDCP compatible))] HDMI in [HDMI 19-pin x 1 (HDCP compatible)] RGB in [D-sub HD 15-pin x 1 (RGB x 1)] RGB in [BNC x 5 (RGB/YpPr/YCbCr x 1)] S-Video in [Mini-DIN 4-pin x 1] Serial in [D-sub 9-pin x 1 (RS-232C x 1)] Serial out [D-sub 9-pin x 1 (RS-232C x 1)] Remote 1 in [M3 x 1] LAN [RJ-45 x 1 (10Base-T/100Base-TX)] USB [USB type-B x 1] Optional board slot [Slot x 2]
120 V AC, 9 A, 50/60 Hz 220-240 V AC, 4.7 A, 50/60 Hz 925 W (120 V AC)/900 W (220-240 V AC) 530 x 200*7 x 548.5 mm*8 (20-7/8 x 7-7/8*7 x 21-19/32 inches)*8 Approx. 24 kg/52.9 lbs Eco Filter Yes Yes Yes Yes*4 System Daylight View 2 Detail Clarity Processor 3 Yes Yes	200-240 V AC, 11 A, 50/60 Hz 1,850 W 650 x 349 x 815 mm*8 (25-19/32 x 13-3/4 x 32-3/32 inches)*8 Approx. 46.5 kg/102.5 lbs Pleated Air Filter Yes - - - - - - -	100-240 V AC, 11 A, 50/60 Hz 940 W 538.5 x 268 x 757 mm*8 (21-7/32 x 10-9/16 x 29-3/16 inches)*8 Approx. 28 kg/61.7 lbs Eco Filter Yes - - - - - - -
ET-LAD310A/ET-LAD310AW (2 units) ET-LAD320P/ET-LAD320PW (for portraйт mode) ET-PKD310H (High ceiling mount bracket) ET-PKD310S (Low ceiling mount bracket) ET-PAD310 (Attachment for ceiling mount bracket) ET-PFD310 (Frame) ET-EMF320 (Replacement filter unit) ET-SFD320 (Smoke cut filter) ET-CUK10*9 (Auto Screen Adjustment Upgrade Kit)	ET-LAE16 ET-PKE16H (High ceiling mount bracket) ET-PKE16S (Low ceiling mount bracket) ET-PKE16B (Bracket assembly) ET-MD16SD1 (HD-SDI/SD-SDI board) ET-SFE16 (Smoke cut filter unit) ET-SRE16 (Replacement filter for the ET-SFE16) ET-RFE16 (Replacement filter unit)	ET-LAE12 ET-PKE16H (High ceiling mount bracket) ET-PKE16S (Low ceiling mount bracket) ET-PKE12B (Bracket assembly) ET-MD16SD1 (HD-SDI/SD-SDI board) ET-RFE12 (Replacement filter unit)
ET-D75LE6 (Zoom lens, 0.9-1.1:1) ET-D75LE10 (Zoom lens, 1.3-1.7:1) ET-D75LE20 (Zoom lens, 1.7-2.4:1) ET-D75LE30 (Zoom lens, 2.4-4.7:1) ET-D75LE40 (Zoom lens, 4.6-7.4:1) ET-D75LE8 (Zoom lens, 7.3-13.8:1) ET-D75LE50 (Fixed-focus lens, 0.7:1) ET-D75MC1 (Lens motor cover)	ET-ELW06 (Zoom lens, 1.2-1.5:1) ET-ELW02 (Zoom lens, 1.4-1.8:1) ET-ELW04 (Zoom lens, 1.5-2.0:1) ET-ELS02 (Zoom lens, 2.0-2.6:1) ET-ELS03 (Zoom lens, 2.6-3.5:1) ET-ELM01 (Zoom lens, 3.5-4.5:1) ET-ELT02 (Zoom lens, 4.4-6.2:1) ET-ELT03 (Zoom lens, 6.3-9.0:1) ET-ELW03 (Fixed-focus lens, 0.8:1)	ET-ELW06 (Zoom lens, 1.2-1.5:1) ET-ELW02 (Zoom lens, 1.4-1.8:1) ET-ELW04 (Zoom lens, 1.5-2.0:1) ET-ELS02 (Zoom lens, 2.0-2.6:1) ET-ELS03 (Zoom lens, 2.6-3.5:1) ET-ELM01 (Zoom lens, 3.5-4.5:1) ET-ELT02 (Zoom lens, 4.4-6.2:1) ET-ELT03 (Zoom lens, 6.3-9.0:1) ET-ELW03 (Fixed-focus lens, 0.8:1)
Power cord, wireless/wired remote control unit, batteries for remote control unit, software CD-ROM (Logo Transfer Software, Multi Projector Monitoring and Control Software)	Power cord, wireless/wired remote control unit, batteries for remote control unit, computer cable, lens attachment, lens lock lever fixing bracket, lightshielding plate, spacer, cable tie, CD-ROM*14	Power cord, wireless/wired remote control unit, batteries for remote control unit, computer cable, lens attachment, lens lock lever fixing bracket, lightshielding plate, spacer, cable tie, CD-ROM*14

*8: Depth; lens not included. *9: Available for use worldwide except in the United States. *10: Vertical ±60% and horizontal ±20% with the ET-D75LE6. *11: Vertical ±44% and horizontal ±15% with the ET-D75LE6. *12: 2.54-15.24 m (100-600 inches) with the ET-ELS03. *13: Vertical ±39% with the ET-ELW06, and vertical ±50% and horizontal ±10% with ET-ELS02. *14: CD-ROM includes Logo Transfer Software, Multi Projector Monitoring and Control Software, and Real Color Manager Pro.

Installation

PT-DZ870
PT-DZ870L*4



DIGITAL LINK **ED PROFESSIONAL**

1-Chip DLP™ Projector | 8,500 lm | WUXGA | **WIRED LAN** | **Portrait***5

PT-DW830
PT-DW830L*4



DIGITAL LINK **ED PROFESSIONAL**

1-Chip DLP™ Projector | 8,500 lm | WXGA | **WIRED LAN** | **Portrait***5

	PT-DZ870 PT-DZ870L*4	PT-DW830 PT-DW830L*4	
Optical	Panel type	17 mm (0.67 inches) DLP™ chip x 1	16.5 mm (0.65 inches) DLP™ chip x 1
	Aspect ratio	16:10	16:10
	Lamp	420 W UHM x 2	420 W UHM x 2
	Brightness	8,500 lm	8,500 lm
	Lens (throw ratio)	F 1.7-1.9, f 25.6-35.7 mm [1.7-2.4:1] (PT-DZ870)	F 1.7-1.9, f 25.6-35.7 mm [1.8-2.5:1] (PT-DW830)
	Contrast (full on/full off)	10,000:1	10,000:1
	Resolution native/maximum*1	WUXGA (1,920 x 1,200)	WXGA (1,280 x 800)/WUXGA (1,920 x 1,200)
	Screen size (diagonal)*2	1.27-15.24 m (50-600 inches)*6	1.27-15.24 m (50-600 inches)*6
Optical	Lens shift	Vertical: +50 %, horizontal: ±10 % [powered]	Vertical: +60 %, horizontal: ±10 % [powered]
	Terminals	SDI in [BNC x 1 (3G/HD/SD-SDI x 1)] DVI-D in [DVI-D 24-pin x 1 (DVI-D x 1 (HDCP compatible))] HDMI in [HDMI 19-pin x 1 (HDCP compatible)] RGB 1 in [BNC x 5 (RGB/YpPr/YCbCr x 1)] RGB 2 in [D-sub HD 15-pin x 1 (RGB/YpPr/YCbCr x 1)] Composite video in [BNC x 1] 3D SYNC in/out [BNC x 1 (3D timing signal)] 3D SYNC out [BNC x 1 (3D timing signal)] Serial in [D-sub 9-pin x 1 (RS-232C)] Serial out [D-sub 9-pin x 1 (RS-232C)] Remote 1 in/out [M3 x 2 (in x 1, out x 1)] Remote 2 in [D-sub 9-pin x 1] LAN/DIGITAL LINK [RJ-45 x 1, for network/DIGITAL LINK connection, 100Base-TX, HDCP compatible, Art-net]	DVI-D in [DVI-D 24-pin x 1 (DVI-D x 1 (HDCP compatible))] HDMI in [HDMI 19-pin x 1 (HDCP compatible)] RGB 1 in [BNC x 5 (RGB/YpPr/YCbCr x 1)] RGB 2 in [D-sub HD 15-pin x 1 (RGB/YpPr/YCbCr x 1)] Composite video in [BNC x 1] 3D SYNC in/out [BNC x 1 (3D timing signal)] 3D SYNC out [BNC x 1 (3D timing signal)] Serial in [D-sub 9-pin x 1 (RS-232C)] Serial out [D-sub 9-pin x 1 (RS-232C)] Remote 1 in/out [M3 x 2 (in x 1, out x 1)] Remote 2 in [D-sub 9-pin x 1] LAN/DIGITAL LINK [RJ-45 x 1, for network/DIGITAL LINK connection, 100Base-TX, HDCP compatible, Art-net]
General	Power supply	120-240 V AC, 10-5.2 A, 50/60 Hz	120-240 V AC, 10-5.2 A, 50/60 Hz
	Power consumption	1,030 W	1,030 W
	Dimensions (W x H x D)	498 x 200*7 x 556 mm*8 [19-19/32 x 7-7/8*7 x 21-7/8 inches]*8	498 x 200*7 x 556 mm*8 [19-19/32 x 7-7/8*7 x 21-7/8 inches]*8
	Weight*3	Approx. 18.3 kg/40.3 lbs (PT-DZ870L: approx. 17.6 kg/38.8 lbs)	Approx. 18.3 kg/40.3 lbs (PT-DW830L: approx. 17.6 kg/38.8 lbs)
Features	Filter	Filter-less for Optics	Filter-less for Optics
	Edge Blending	Yes	Yes
	Geometric Adjustment	Yes (Optional upgrade kit available)	-
	Portrait mode	Yes*5	Yes*5
	RGB Booster	Yes (Dynamic RGB Booster)	Yes (Dynamic RGB Booster)
	Daylight View	System Daylight View 2	System Daylight View 2
	Detail Clarity Processor	Detail Clarity Processor 3	Detail Clarity Processor 3
	DICOM Simulation Mode	Yes	Yes
	P-in-P/Side-by-Side	P-in-P/Side-by-Side	P-in-P/Side-by-Side
Accessory	Replacement lamp	ET-LAD120/ET-LAD120W (2 units) ET-LAD120P/ET-LAD120PW (for portrait mode) ET-PKD120H (High-ceiling mount bracket) ET-PKD120S (Low-ceiling mount bracket) ET-PKD120B (Attachment for ceiling mount bracket) ET-YFB100G (Digital Interface Box) ET-UK20 (Upgrade kit with Geometry Manager Pro) ET-CUK10*9 (Auto Screen Adjustment Upgrade Kit)	ET-LAD120/ET-LAD120W (2 units) ET-LAD120P/ET-LAD120PW (for portrait mode) ET-PKD120H (High-ceiling mount bracket) ET-PKD120S (Low-ceiling mount bracket) ET-PKD120B (Attachment for ceiling mount bracket) ET-YFB100G (Digital Interface Box)
	Optional accessories	ET-PKD120H (High-ceiling mount bracket) ET-PKD120S (Low-ceiling mount bracket) ET-PKD120B (Attachment for ceiling mount bracket) ET-YFB100G (Digital Interface Box)	ET-PKD120H (High-ceiling mount bracket) ET-PKD120S (Low-ceiling mount bracket) ET-PKD120B (Attachment for ceiling mount bracket) ET-YFB100G (Digital Interface Box)
	Optional lens	ET-DLE085 (Zoom lens, 0.8-1.0:1) ET-DLE150 (Zoom lens, 1.3-1.9:1) ET-DLE250 (Zoom lens, 2.3-3.6:1) ET-DLE350 (Zoom lens, 3.6-5.4:1) ET-DLE450 (Zoom lens, 5.4-8.6:1) ET-DLE055 (Fixed-focus lens, 0.8:1) ET-DLE030 (Fixed-focus lens, 0.38:1)	ET-DLE085 (Zoom lens, 0.8-1.0:1) ET-DLE150 (Zoom lens, 1.4-2.0:1) ET-DLE250 (Zoom lens, 2.4-3.8:1) ET-DLE350 (Zoom lens, 3.8-5.7:1) ET-DLE450 (Zoom lens, 5.6-9.0:1) ET-DLE055 (Fixed-focus lens, 0.8:1) ET-DLE030 (Fixed-focus lens, 0.4:1)
	Standard accessories	Power cord, power cord secure lock, wireless/wired remote control unit, batteries for remote control unit, CD-ROM*10	Power cord, power cord secure lock, wireless/wired remote control unit, batteries for remote control unit, CD-ROM*10

*1: Input signals that exceed the native resolution will be converted to the native resolution. *2: The screen size is that of the original aspect ratio.

*3: Average value. Each product has an individual variable in weight. *4: Lens-less model. *5: Mounting the optional lamp unit for portrait mode and updating the projector's firmware to MAIN Ver. 2.00 or later are required. *6: 1.27-5.08 m (50-200 inches) with the ET-DLE055.

PT-DX100
PT-DX100L*4



1-Chip DLP™ Projector



10,000 lm XGA

PT-DZ770K
PT-DZ770LK*4



1-Chip DLP™ Projector



7,000 lm WUXGA

PT-DW740S
PT-DW740LS*4



1-Chip DLP™ Projector



7,000 lm WXGA

17.8 mm (0.7 inches) DLP™ chip x 1
4:3
420 W UHM x 2
10,000 lm
F 1.7-1.9, f 25.6-35.7 mm (1.8-2.5:1) [PT-DX100]
10,000:1
XGA (1,024 x 768)/WUXGA (1,920 x 1,200)
1.27-15.24 m (50-600 inches)*6
Vertical: +50%*11, horizontal: ±10% [powered]
DVI-D in [DVI-D 24-pin x 1 [DVI-D x 1 [HDCP compatible]]]
HDMI in [HDMI 19-pin x 1 [HDCP compatible]]
RGB 1 in [BNC x 5 [RGB/Y/PbPr/YCbCr x 1]]
RGB 2 in [D-sub HD 15-pin x 1 [RGB/Y/PbPr/YCbCr x 1]]
Composite video in [BNC x 1]
3D SYNC in/out [BNC x 1 [3D timing signal]]
3D SYNC out [BNC x 1 [3D timing signal]]
Serial in [D-sub 9-pin x 1 [RS-232C]]
Serial out [D-sub 9-pin x 1 [RS-232C]]
Remote 1 in/out [M3 x 2 (in x 1, out x 1)]
Remote 2 in [D-sub 9-pin x 1]
Remote 2 in [D-sub 9-pin x 1]
LAN/DIGITAL LINK
[RJ-45 x 1, for network/DIGITAL LINK connection, 100Base-TX, HDCP compatible, Art-net]

17.0 mm (0.67 inches) DLP™ chip x 1
16:10
300 W (max 310 W) UHM x 2
7,000 lm
F 1.7-1.9, f 25.6-35.7 mm (1.7-2.4:1) [PT-DZ770K]
2,500:1 [contrast mode: high]
WUXGA (1,920 x 1,200)
1.27-15.24 m (50-600 inches)*6
Vertical: +50%, horizontal: ±10% [powered]
DVI-D in [DVI-D 24-pin x 1 [DVI-D x 1 [HDCP compatible]]]
HDMI in [HDMI 19-pin x 1 [HDCP compatible]]
RGB 1 in [BNC x 5 [RGB/Y/PbPr/YCbCr x 1]]
RGB 2 in [D-sub HD 15-pin x 1 [RGB/Y/PbPr/YCbCr x 1]]
Composite video in [BNC x 1]
S-Video in [Mini-DIN 4-pin x 1]
Serial in [D-sub 9-pin x 1 [RS-232C]]
Serial out [D-sub 9-pin x 1 [RS-232C]]
Remote 1 in/out [M3 x 2 (in x 1, out x 1)]
Remote 2 in [D-sub 9-pin x 1]
LAN [RJ-45 x 1 [10Base-T/100Base-TX]]

16.5 mm (0.65 inches) DLP™ chip x 1
16:10
300 W (max 310 W) UHM x 2
7,000 lm
F 1.7-1.9, f 25.6-35.7 mm (1.8-2.5:1) [PT-DW740S]
2,500:1 [contrast mode: high]
WXGA (1,280 x 800)/WUXGA (1,920 x 1,200)
1.27-15.24 m (50-600 inches)*6
Vertical: +60%, horizontal: ±10% [powered]
DVI-D in [DVI-D 24-pin x 1 [DVI-D x 1 [HDCP compatible]]]
HDMI in [HDMI 19-pin x 1 [HDCP compatible]]
RGB 1 in [BNC x 5 [RGB/Y/PbPr/YCbCr x 1]]
RGB 2 in [D-sub HD 15-pin x 1 [RGB/Y/PbPr/YCbCr x 1]]
Composite video in [BNC x 1]
S-Video in [Mini-DIN 4-pin x 1]
Serial in [D-sub 9-pin x 1 [RS-232C]]
Serial out [D-sub 9-pin x 1 [RS-232C]]
Remote 1 in/out [M3 x 2 (in x 1, out x 1)]
Remote 2 in [D-sub 9-pin x 1]
LAN [RJ-45 x 1 [10Base-T/100Base-TX]]

120-240 V AC, 10-5.2 A, 50/60 Hz
1,030 W
498 x 200*7 x 556 mm*8
[19-19/32 x 7-7/8*7 x 21-7/8 inches]*8
Approx. 18.3 kg/40.3 lbs
[PT-DX100L: approx. 17.6 kg/38.8 lbs]

120 V AC, 8 A, 50/60 Hz
220-240 V AC, 4.5 A, 50/60 Hz
830 W [120 V AC]/810 W [220-240 V AC]
498 x 175*7 x 466 mm*12
[19-19/32 x 6-7/8*7 x 18-11/32 inches]*12
Approx. 16.3 kg/35.9 lbs
[PT-DZ770LK: approx. 15.4 kg/34.0 lbs]

120 V AC, 7.5 A, 50/60 Hz
220-240 V AC, 4.3 A, 50/60 Hz
790 W [120 V AC]/760 W [220-240 V AC]
498 x 175*7 x 466 mm*12
[19-19/32 x 6-7/8*7 x 18-11/32 inches]*12
Approx. 16.3 kg/35.9 lbs
[PT-DW740LS: approx. 15.4 kg/34.0 lbs]

Filter-less for Optics
Yes
-
-
Yes*5
Yes [Dynamic RGB Booster]
System Daylight View 2
Detail Clarity Processor 3
Yes
P-in-P/Side-by-Side

Eco Filter
Yes
-
-
Yes
System Daylight View 2
Detail Clarity Processor
Yes
Side-by-Side

Eco Filter
Yes
-
-
Yes
System Daylight View 2
Detail Clarity Processor
Yes
Side-by-Side

ET-LAD120/ET-LAD120W [2 units]
ET-LAD120P/ET-LAD120PW [for portrait mode]
ET-PKD120H [High-ceiling mount bracket]
ET-PKD120S [Low-ceiling mount bracket]
ET-PKD120B [Attachment for ceiling mount bracket]
ET-YFB100G [Digital Interface Box]

ET-LAD60A
ET-LAD60AW [2 units]
ET-PKD56H [High ceiling mount bracket]
ET-PKD55S [Low ceiling mount bracket]
ET-EMF300 [Replacement filter unit]

ET-LAD60A
ET-LAD60AW [2 units]
ET-PKD56H [High-ceiling mount bracket]
ET-PKD55S [Low-ceiling mount bracket]
ET-EMF300 [Replacement filter unit]

ET-DLE085 [Zoom lens, 0.8-1.0:1]
ET-DLE150 [Zoom lens, 1.3-2.0:1]
ET-DLE250 [Zoom lens, 2.4-3.7:1]
ET-DLE350 [Zoom lens, 3.7-5.6:1]
ET-DLE450 [Zoom lens, 5.5-8.9:1]
ET-DLE055 [Fixed-focus lens, 0.8:1]
ET-DLE030 [Fixed-focus lens, 0.39:1]

ET-DLE080 [Zoom lens, 0.8-1.0:1]
ET-DLE085 [Zoom lens, 0.8-1.0:1]
ET-DLE150 [Zoom lens, 1.3-1.9:1]
ET-DLE250 [Zoom lens, 2.3-3.6:1]
ET-DLE350 [Zoom lens, 3.6-5.4:1]
ET-DLE450 [Zoom lens, 5.4-8.6:1]
ET-DLE055 [Fixed-focus lens, 0.8:1]
ET-DLE030 [Fixed-focus lens, 0.38:1]

ET-DLE080 [Zoom lens, 0.8-1.0:1]
ET-DLE085 [Zoom lens, 0.8-1.0:1]
ET-DLE150 [Zoom lens, 1.4-2.0:1]
ET-DLE250 [Zoom lens, 2.4-3.8:1]
ET-DLE350 [Zoom lens, 3.8-5.7:1]
ET-DLE450 [Zoom lens, 5.6-9.0:1]
ET-DLE055 [Fixed-focus lens, 0.8:1]
ET-DLE030 [Fixed-focus lens, 0.4:1]

Power cord, power cord secure lock, wireless/wired remote control unit, batteries for remote control unit, CD-ROM*10

Power cord, power cord secure lock, wireless/wired remote control unit, batteries for remote control unit, CD-ROM*10

Power cord, power cord secure lock, wireless/wired remote control unit, batteries for remote control unit, CD-ROM*10

*7: Height: with legs at shortest position. *8: Depth: including the supplied lens. Depth: 513 mm [20-3/16 inches] for the lens-less models.
*9: Available for use worldwide except in the United States. *10: CD-ROM includes Logo Transfer Software and Multi Projector Monitoring and Control Software.
*11: Vertical +45% with the ET-DLE085. *12: Depth: including the supplied lens. Depth: 432 mm [17 inches] for the lens-less models.

Installation

PT-DX810S
PT-DX810LS*4



1-Chip DLP™ Projector
8,200 lm XGA WLED LAN

PT-DZ680
PT-DZ680L*4



1-Chip DLP™ Projector
6,000 lm WUXGA WLED LAN

* Available in silver/black cabinet.

	PT-DX810S PT-DX810LS*4	PT-DZ680 PT-DZ680L*4	
Optical	Panel type	17.8 mm (0.7 inches) DLP™ chip x 1	17.0 mm (0.67 inches) DLP™ chip x 1
	Aspect ratio	4:3	16:10
	Lamp	300 W (max 310 W) UHM x 2	280 W UHM x 2
	Brightness	8,200 lm	6,000 lm
	Lens (throw ratio)	F 1.7-1.9, f 25.6-35.7 mm (1.8-2.5:1) [PT-DX810S]	F 1.7-2.0, f 26.8-35.7 mm (1.8-2.4:1) [PT-DZ680]
	Contrast (full on/full off)	2,000:1 (contrast mode: high)	2,000:1 (contrast mode: high)
	Resolution native/maximum*1	XGA (1,024 x 768)/WUXGA (1,920 x 1,200)	WUXGA (1,920 x 1,200)
	Screen size (diagonal)*2	1.27-15.24 m (50-600 inches)*5	1.27-15.24 m (50-600 inches)*5
Interface	Terminal	Vertical: +50%*6, horizontal: ±10% [powered]	Vertical: +50%, horizontal: ±10% [powered]
	Terminals	DVI-D in [DVI-D 24-pin x 1 (DVI-D x 1 (HDCP compatible))] HDMI in [HDMI 19-pin x 1 (HDCP compatible)] RGB 1 in [BNC x 5 (RGB/YPbPr/YCbCr x 1)] RGB 2 in [D-sub HD 15-pin x 1 (RGB/YPbPr/YCbCr x 1)] Composite video in [BNC x 1] S-Video in [Mini-DIN 4-pin x 1] Serial in [D-sub 9-pin x 1 (RS-232C)] Serial out [D-sub 9-pin x 1 (RS-232C)] Remote 1 in/out [M3 x 2 (in x 1, out x 1)] Remote 2 in [D-sub 9-pin x 1] LAN [RJ-45 x 1 (10Base-T/100Base-TX)]	DVI-D in [DVI-D 24-pin x 1 (DVI-D x 1 (HDCP compatible))] HDMI in [HDMI 19-pin x 1 (HDCP compatible)] RGB 1 in [BNC x 5 (RGB/YPbPr/YCbCr x 1)] RGB 2 in [D-sub HD 15-pin x 1 (RGB/YPbPr/YCbCr x 1)] Composite video in [BNC x 1] S-Video in [Mini-DIN 4-pin x 1] Serial in [D-sub 9-pin x 1 (RS-232C)] Serial out [D-sub 9-pin x 1 (RS-232C)] Remote 1 in/out [M3 x 2 (in x 1, out x 1)] Remote 2 in [D-sub 9-pin x 1] LAN [RJ-45 x 1 (10Base-T/100Base-TX)]
General	Power supply	120 V AC, 7.5 A, 50/60 Hz 220-240 V AC, 4.3 A, 50/60 Hz	120 V AC, 7.3 A, 50/60 Hz 220-240 V AC, 4.0 A, 50/60 Hz
	Power consumption	790 W (120 V AC) 760 W (220-240 V AC)	750 W (120 V AC) 730 W (220-240 V AC)
	Dimensions (W x H x D)	498 x 175*7 x 466 mm*8 (19-19/32 x 6-7/8*7 x 18-11/32 inches)*8	498 x 175*7 x 440 mm*8 (19-19/32 x 6-7/8*7 x 17-5/16 inches)*8
	Weight*3	Approx. 16.3 kg/35.9 lbs (PT-DX810LS: approx. 15.4 kg/34.0 lbs)	Approx. 16.0 kg/35.3 lbs (PT-DZ680L: approx. 15.1 kg/33.3 lbs)
Features	Filter	Eco Filter	Eco Filter
	Edge Blending	Yes	Yes
	Geometric Adjustment	-	-
	Emulation	-	-
	RGB Booster	Yes	Yes
	Daylight View	System Daylight View 2	System Daylight View 2
	Detail Clarity Processor	Detail Clarity Processor	Detail Clarity Processor
	DICOM Simulation Mode	Yes	Yes
P-in-P/Side-by-Side	-	Side-by-Side	
Accessory	Replacement lamp	ET-LAD60A/ET-LAD60AW (2 units)	ET-LAD60A/ET-LAD60AW (2 units)
	Optional accessories	ET-PKD56H (High-ceiling mount bracket) ET-PKD55S (Low-ceiling mount bracket) ET-EMF300 (Replacement filter unit)	ET-PKD56H (High ceiling mount bracket) ET-PKD55S (Low ceiling mount bracket) ET-EMF300 (Replacement filter unit)
	Optional lens	ET-DLE080 (Zoom lens, 0.8-1.0:1) ET-DLE085 (Zoom lens, 0.8-1.0:1) ET-DLE150 (Zoom lens, 1.3-2.0:1) ET-DLE250 (Zoom lens, 2.4-3.7:1) ET-DLE350 (Zoom lens, 3.7-5.6:1) ET-DLE450 (Zoom lens, 5.5-8.9:1) ET-DLE055 (Fixed-focus lens, 0.8:1) ET-DLE030 (Fixed-focus lens, 0.39:1)	ET-DLE080 (Zoom lens, 0.8-1.0:1) ET-DLE085 (Zoom lens, 0.8-1.0:1) ET-DLE150 (Zoom lens, 1.3-1.9:1) ET-DLE250 (Zoom lens, 2.3-3.6:1) ET-DLE350 (Zoom lens, 3.6-5.4:1) ET-DLE450 (Zoom lens, 5.4-8.6:1) ET-DLE055 (Fixed-focus lens, 0.8:1) ET-DLE030 (Fixed-focus lens, 0.38:1)
	Standard accessories	Power cord, power cord secure lock, wireless/wired remote control unit, batteries for remote control unit, CD-ROM*9	Power cord, power cord secure lock, wireless/wired remote control unit, batteries for remote control unit, CD-ROM*9

*1: Input signals that exceed the native resolution will be converted to the native resolution. *2: The screen size is that of the original aspect ratio. *3: Average value. Each product has an individual variable in weight. *4: Lens-less model. *5: 1.27-5.08 m (50-200 inches) with the ET-DLE055. *6: Vertical +45% with the ET-DLE080.

PT-DW640
PT-DW640L*4



1-Chip DLP™ Projector **WIRED LAN**
6,000 lm WXGA

* Available in silver/black cabinet.

PT-DX610
PT-DX610L*4



1-Chip DLP™ Projector **WIRED LAN**
6,500 lm XGA

* Available in silver/black cabinet.

16.5 mm [0.65 inches] DLP™ chip x 1 16:10	17.8 mm [0.7 inches] DLP™ chip x 1 4:3
280 W UHM x 2 6,000 lm	280 W UHM x 2 6,500 lm
F 1.7-2.0, f 25.6-33.8 mm [1.8-2.4:1] [PT-DW640]	F 1.7-2.0, f 25.6-33.8 mm [1.8-2.4:1] [PT-DX610]
2,000:1 [contrast mode: high]	2,000:1 [contrast mode: high]
WXGA (1,280 x 800)/WUXGA (1,920 x 1,200)	XGA (1,024 x 768)/WUXGA (1,920 x 1,200)
1.27-15.24 m [50-600 inches]*5	1.27-15.24 m [50-600 inches]*5
Vertical: +60 %, horizontal: ±10 % [powered]	Vertical: +50 %*, horizontal: ±10 % [powered]
DVI-D in [DVI-D 24-pin x 1 [DVI-D x 1 [HDCP compatible]]]	DVI-D in [DVI-D 24-pin x 1 [DVI-D x 1 [HDCP compatible]]]
HDMI in [HDMI 19-pin x 1 [HDCP compatible]]	HDMI in [HDMI 19-pin x 1 [HDCP compatible]]
RGB 1 in [BNC x 5 [RGB/YPbPr/YCbCr x 1]]	RGB 1 in [BNC x 5 [RGB/YPbPr/YCbCr x 1]]
RGB 2 in [D-sub HD 15-pin x 1 [RGB/YPbPr/YCbCr x 1]]	RGB 2 in [D-sub HD 15-pin x 1 [RGB/YPbPr/YCbCr x 1]]
Composite video in [BNC x 1]	Composite video in [BNC x 1]
S-Video in [Mini-DIN 4-pin x 1]	S-Video in [Mini-DIN 4-pin x 1]
Serial in [D-sub 9-pin x 1 [RS-232C]]	Serial in [D-sub 9-pin x 1 [RS-232C]]
Serial out [D-sub 9-pin x 1 [RS-232C]]	Serial out [D-sub 9-pin x 1 [RS-232C]]
Remote 1 in/out [M3 x 2 [in x 1, out x 1]]	Remote 1 in/out [M3 x 2 [in x 1, out x 1]]
Remote 2 in [D-sub 9-pin x 1]	Remote 2 in [D-sub 9-pin x 1]
LAN [RJ-45 x 1 [10Base-T/100Base-TX]]	LAN [RJ-45 x 1 [10Base-T/100Base-TX]]
120 V AC, 6.8 A, 50/60 Hz	120 V AC, 6.8 A, 50/60 Hz
220-240 V AC, 3.8 A, 50/60 Hz	220-240 V AC, 3.8 A, 50/60 Hz
710 W [120 V AC]	710 W [120 V AC]
690 W [220-240 V AC]	690 W [220-240 V AC]
498 x 175*7 x 440 mm*8	498 x 175*7 x 440 mm*8
[19-19/32 x 6-7/8*7 x 17-5/16 inches]*8	[19-19/32 x 6-7/8*7 x 17-5/16 inches]*8
Approx. 16.0 kg/35.3 lbs	Approx. 16.0 kg/35.3 lbs
[PT-DW640L: approx. 15.1 kg/33.3 lbs]	[PT-DX610L: approx. 15.1 kg/33.3 lbs]
Eco Filter	Eco Filter
Yes	Yes
-	-
Yes	Yes
System Daylight View 2	System Daylight View 2
Detail Clarity Processor	Detail Clarity Processor
Yes	Yes
Side-by-Side	-
ET-LAD60A/ET-LAD60AW [2 units]	ET-LAD60A/ET-LAD60AW [2 units]
ET-PKD56H [High ceiling mount bracket]	ET-PKD56H [High ceiling mount bracket]
ET-PKD55S [Low ceiling mount bracket]	ET-PKD55S [Low ceiling mount bracket]
ET-EMF300 [Replacement filter unit]	ET-EMF300 [Replacement filter unit]
ET-DLE080 [Zoom lens, 0.8-1.0:1]	ET-DLE080 [Zoom lens, 0.8-1.0:1]
ET-DLE085 [Zoom lens, 0.8-1.0:1]	ET-DLE085 [Zoom lens, 0.8-1.0:1]
ET-DLE150 [Zoom lens, 1.4-2.0:1]	ET-DLE150 [Zoom lens, 1.3-2.0:1]
ET-DLE250 [Zoom lens, 2.4-3.8:1]	ET-DLE250 [Zoom lens, 2.4-3.7:1]
ET-DLE350 [Zoom lens, 3.8-5.7:1]	ET-DLE350 [Zoom lens, 3.7-5.6:1]
ET-DLE450 [Zoom lens, 5.6-9.0:1]	ET-DLE450 [Zoom lens, 5.5-8.9:1]
ET-DLE055 [Fixed-focus lens, 0.8:1]	ET-DLE055 [Fixed-focus lens, 0.8:1]
ET-DLE030 [Fixed-focus lens, 0.4:1]	ET-DLE030 [Fixed-focus lens, 0.39:1]
Power cord, power cord secure lock, wireless/wired remote control unit, batteries for remote control unit, CD-ROM*9	Power cord, power cord secure lock, wireless/wired remote control unit, batteries for remote control unit, CD-ROM*9

*7: Height: with legs at shortest position.

*8: Depth: including the supplied lens. Depth: 432 mm [17 inches] for the lens-less models.

*9: CD-ROM includes Logo Transfer Software and Multi Projector Monitoring and Control Software.

Key Features

Supporting Stable Operation

Early Warning Software

ET-SWA100 Early Warning Software monitors projectors and displays connected to an intranet and informs you when an abnormality is detected or predicted*, and when there are some symptoms of trouble. It can also record the operating conditions of each device and, based on the operating hours, it can predict* and tell you approximately when consumable parts will be required, regular periodic cleaning will be necessary, and non-consumable parts will need to be replaced.

* Please note that the software does not guarantee the prediction of all device breakdowns in all instances.



Advantages

- Advance notice of required maintenance and problem prediction help to prevent or minimize downtime.
- Remote monitoring from your own device allows you to greatly speed up troubleshooting.
- Can be smoothly integrated to your existing monitoring system by using SNMP protocol.

Please visit PASS (panasonic.net/avc/projector/pass/) to download and activate Early Warning Software.

A free, **90-day trial version** for monitoring up to **2,048 projectors** is available.

For more information about the ET-SWA100 and the compatible models, please visit the website >> panasonic.net/avc/projector

Installation

PT-DZ570



1-Chip DLP™ Projector

4,000 lm

WUXGA

WIRED LAN

option⁴
WIRELESS

PT-DW530



1-Chip DLP™ Projector

4,000 lm

WXGA

WIRED LAN

option⁴
WIRELESS

Optical	Panel type	17.0 mm (0.67 inches) DLP™ chip x 1	16.5 mm (0.65 inches) DLP™ chip x 1
	Aspect ratio	16:10	16:10
	Lamp	300 W (max 310 W) UHM	300 W (max 310 W) UHM
	Brightness	4,000 lm	4,000 lm
	Lens (throw ratio)	F 2.0-3.4, f 21.5-43.0 mm (1.45-2.94:1)	F 2.0-3.4, f 21.5-43.0 mm (1.53-3.09:1)
	Contrast (full on/full off)	2,000:1	2,000:1
	Resolution native/maximum*1	WUXGA (1,920 x 1,200)	WXGA (1,280 x 800)/WUXGA (1,920 x 1,200)
	Screen size (diagonal)*2	1.02-7.62 m (40-300 inches)	1.02-7.62 m (40-300 inches)
	Lens shift	Vertical: +60 %, horizontal: ±10 % (manual)	Vertical: +70 %, horizontal: ±10 % (manual)
Interface	Built-in speaker	-	-
	Terminals	HDMI in [HDMI 19-pin x 1 (HDCP compatible)] DVI-D in [DVI-D 24-pin x 1 (DVI-D x 1 (HDCP compatible))] RGB 1 in [BNC x 5 (RGB/Y/PaPr/YCaCr x 1)] RGB 2 in [D-sub HD 15-pin x 1 (RGB/Y/PaPr/YCaCr x 1)] Composite video in [BNC x 1] S-Video in [Mini-DIN 4-pin x 1] Audio in 1 [Pin jack x 2 (L x 1, R x 1)] Audio in 2 [M3 x 1 (L-R x 1)] Audio in 3 [M3 x 1 (L-R x 1)] Audio out [M3 x 1 (L-R x 1)] Serial in [D-sub 9-pin x 1 (RS-232C)] Remote in [D-sub 9-pin x 1] LAN [RJ-45 x 1 (10Base-T/100Base-TX)] Wireless module input terminal [for optional ET-WM200 x 1]	HDMI in [HDMI 19-pin x 1 (HDCP compatible)] DVI-D in [DVI-D 24-pin x 1 (DVI-D x 1 (HDCP compatible))] RGB 1 in [BNC x 5 (RGB/Y/PaPr/YCaCr x 1)] RGB 2 in [D-sub HD 15-pin x 1 (RGB/Y/PaPr/YCaCr x 1)] Composite video in [BNC x 1] S-Video in [Mini-DIN 4-pin x 1] Audio in 1 [Pin jack x 2 (L x 1, R x 1)] Audio in 2 [M3 x 1 (L-R x 1)] Audio in 3 [M3 x 1 (L-R x 1)] Audio out [M3 x 1 (L-R x 1)] Serial in [D-sub 9-pin x 1 (RS-232C)] Remote in [D-sub 9-pin x 1] LAN [RJ-45 x 1 (10Base-T/100Base-TX)] Wireless module input terminal [for optional ET-WM200 x 1]
	Power supply	100-240 V AC, 5.0-1.9 A, 50/60 Hz	100-240 V AC, 5.0-1.9 A, 50/60 Hz
	Power consumption	415 W	415 W
	Dimensions (W x H x D)	332 x 168 ^{†5} x 484.5 mm ^{†6} (13-1/16 x 6-5/8 ^{†5} x 19-1/16 inches) ^{†6}	332 x 168 ^{†5} x 484.5 mm ^{†6} (13-1/16 x 6-5/8 ^{†5} x 19-1/16 inches) ^{†6}
	Weight*3	Approx. 8.5 kg/18.7 lbs	Approx. 8.5 kg/18.7 lbs
	Emulation	Yes	Yes
	RGB Booster	Yes	Yes
	Daylight View	Daylight View Premium	Daylight View Premium
	Detail Clarity Processor	Detail Clarity Processor 3	Detail Clarity Processor 3
DICOM Simulation Mode	Yes	Yes	
P-in-P/Side-by-Side	Side-by-Side	Side-by-Side	
Wireless Ready	Wireless Manager ME 6.0 ^{†4} , iOS ^{†4} , Android ^{†4}	Wireless Manager ME 6.0 ^{†4} , iOS ^{†4} , Android ^{†4}	
Audio Out During Standby	Yes	Yes	
Accessory	Replacement lamp	ET-LAD60A ET-LAD60AW (2 units)	ET-LAD60A ET-LAD60AW (2 units)
	Optional accessories	ET-PKD110H (High ceiling mount bracket) ET-PKD110S (Low ceiling mount bracket) ET-WM200 (Wireless module)	ET-PKD110H (High ceiling mount bracket) ET-PKD110S (Low ceiling mount bracket) ET-WM200 (Wireless module)
	Standard accessories	Power cord, wireless remote control unit, batteries for remote control unit, safety wire rope, software CD-ROM (Logo Transfer Software, Multi Projector Monitoring and Control Software, Wireless Manager ME 6.0)	Power cord, wireless remote control unit, batteries for remote control unit, safety wire rope, software CD-ROM (Logo Transfer Software, Multi Projector Monitoring and Control Software, Wireless Manager ME 6.0)

*1: Input signals that exceed the native resolution will be converted to the native resolution.

*2: The screen size is that of the original aspect ratio.

*3: Average value. Each product has an individual variable in weight.

PT-DX500



1-Chip DLP™ Projector
 4,500 lm | XGA | **WIRED LAN** | **WIRELESS** (option^{*4})

17.8 mm (0.7 inches) DLP™ chip x 1
 4:3
 300 W (max 310 W) UHM
 4,500 lm
 F 2.0-3.4, f 21.5-43.0 mm (1.51-3.05:1)
 2,000:1
 XGA (1,024 x 768)/WUXGA (1,920 x 1,200)
 1.02-7.62 m (40-300 inches)
 Vertical: +60 %, horizontal: ±10 % (manual)

HDMI in [HDMI 19-pin x 1 (HDCP compatible)]
 DVI-D in [DVI-D 24-pin x 1 (DVI-D x 1 (HDCP compatible))]
 RGB 1 in [BNC x 5 (RGB/YPbPr/YCbCr x 1)]
 RGB 2 in [D-sub HD 15-pin x 1 (RGB/YPbPr/YCbCr x 1)]
 Composite video in [BNC x 1]
 S-Video in [Mini-DIN 4-pin x 1]
 Audio in 1 [Pin jack x 2 (L x 1, R x 1)]
 Audio in 2 [M3 x 1 (L-R x 1)]
 Audio in 3 [M3 x 1 (L-R x 1)]
 Audio out [M3 x 1 (L-R x 1)]
 Serial in [D-sub 9-pin x 1 (RS-232C)]
 Remote in [D-sub 9-pin x 1]
 LAN [RJ-45 x 1 (10Base-T/100Base-TX)]
 Wireless module input terminal [for optional ET-WM200 x 1]

100-240 V AC, 5.0-1.9 A, 50/60 Hz
 415 W
 332 x 168^{*5} x 484.5 mm^{*6}
 (13-1/16 x 6-5/8^{*5} x 19-1/16 inches)^{*6}
 Approx. 8.5 kg/18.7 lbs
 Yes
 Yes
 Daylight View Premium
 Detail Clarity Processor 3
 Yes
 -
 Wireless Manager ME 6.0^{*4}, iOS^{*4}, Android^{*4}
 Yes

ET-LAD60A
 ET-LAD60AW (2 units)
 ET-PKD110H (High ceiling mount bracket)
 ET-PKD110S (Low ceiling mount bracket)
 ET-WM200 (Wireless module)

Power cord, wireless remote control unit, batteries for remote control unit, safety wire rope, software CD-ROM (Logo Transfer Software, Multi Projector Monitoring and Control Software, Wireless Manager ME 6.0)

*4: To operate wireless projection, the optional wireless module ET-WM200 is required.
 *5: Height: with legs at shortest position.
 *6: Depth: including the lens.

Key Features

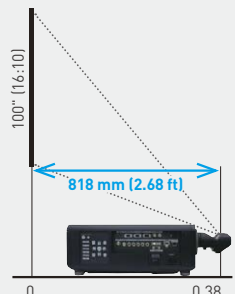
A Wide Lineup of Optional Lenses

Choose from a wide lineup of optional lenses, including short-throw, long-throw zoom and fixed-throw lenses for rear projection use. The additional lenses make it easy to adapt your projector to the installation site. The lenses attach and detach with one-touch ease for many Panasonic projectors. In addition, many optional lenses are compatible from old to new models.



ET-DLE030 Detachable Ultra Short-Throw Lens

The ET-DLE030 ultra short-throw lens lets the PT-DZ870 provide 100-inch wide screen images with a projection distance of 818 mm (2.68 ft). This enables installation in tight spaces.



Requires sufficient airflow space around the projector. This shows the case of a WUXGA projector throw distance.

Application Example: Retail Store Display



For example, promotional images can be projected even in the narrow space of a retail store showcase, where image projection is not possible with a general-purpose lens.

Note: For optional lenses, please refer to the "Accessory" section of each specification sheet.

Large-Venue

Installation

Portable

Short Throw

Home Cinema

Installation

PT-RZ475



1-Chip DLP™ Projector
3,000 lm Full HD WIRELESS LAN Port trait

PT-RZ470



1-Chip DLP™ Projector
3,500 lm Full HD WIRELESS LAN Port trait

* Available in white/black cabinet.

Optical	Panel type	16.5 mm (0.65 inches) DLP™ chip x 1	16.5 mm (0.65 inches) DLP™ chip x 1
	Aspect ratio	16:9	16:9
	Light source	LED/Laser-combined (R, B: LED; G: Laser diode)	LED/Laser-combined (R, B: LED; G: Laser diode)
	Brightness	3,000 lm	3,500 lm
	Lens (throw ratio)	F 1.8, f 11.9 mm (0.8:1)	F 2.0-3.4, f 21.5-43.0 mm (1.46-2.94:1)
	Contrast (full on/full off)	20,000:1	20,000:1
	Resolution native/maximum*1	Full HD (1,920 x 1,080)/WUXGA (1,920 x 1,200)	Full HD (1,920 x 1,080)/WUXGA (1,920 x 1,200)
	Screen size (diagonal)*2	1.02-5.08 m (40-200 inches)	1.02-7.62 m (40-300 inches)
Lens shift	Vertical: ±10 %, horizontal: ±3.4 % (manual)	Vertical: +73 %/-48 %, horizontal: +27 %/-35 % (manual)	
Interface	Built-in speaker	-	-
	Terminals	HDMI in [HDMI 19-pin x 1 (HDCP compatible)] DVI-I in [DVI-I 29-pin x 1 (Digital: HDCP compatible) (Analog: RGB/Y/PbPr/YCbCr x 1)] Computer in [D-sub HD 15-pin x 1 (RGB/Y/PbPr/YCbCr x 1)] Composite video in [Pin jack x 1] Audio in [M3 x 1 (L-R x 1)] Audio out [M3 x 1 (L-R x 1)] Serial in [D-sub 9-pin x 1 (RS-232C)] LAN/DIGITAL LINK [RJ-45 x 1, for network/DIGITAL LINK connection, 100Base-TX, HDCP compatible] 3D SYNC out [Mini Din 3pin x 1 (for 3D Transmitter connection)]	HDMI in [HDMI 19-pin x 1 (HDCP compatible)] DVI-I in [DVI-I 29-pin x 1 (Digital: HDCP compatible) (Analog: RGB/Y/PbPr/YCbCr x 1)] Computer in [D-sub HD 15-pin x 1 (RGB/Y/PbPr/YCbCr x 1)] Composite video in [Pin jack x 1] Audio in [M3 x 1 (L-R x 1)] Audio out [M3 x 1 (L-R x 1)] Serial in [D-sub 9-pin x 1 (RS-232C)] LAN/DIGITAL LINK [RJ-45 x 1, for network/DIGITAL LINK connection, 100Base-TX, HDCP compatible] 3D SYNC out [Mini Din 3pin x 1 (for 3D Transmitter connection)]
	Power supply	100-240 V AC, 5.0-1.8 A, 50/60 Hz	100-240 V AC, 5.2-2.0 A, 50/60 Hz
	Power consumption	430 W (Normal/ECO1: 230 W, ECO2: 170 W) *4	460 W (Normal: 250 W, ECO1: 200 W, ECO2: 178 W) *4
	Dimensions (W x H x D)	455 x 137*5 x 409 mm*6 (17-29/32 x 5-13/32*5 x 16-3/32 inches)*6	455 x 137*5 x 415 mm*6 (17-29/32 x 5-13/32*5 x 16-11/32 inches)*6
	Weight*3	Approx. 11.5 kg/25.4 lbs	Approx. 11.0 kg/24.3 lbs
	Maintenance-free duration	3 years (Normal)*7	20,000 hours*7
	Edge Blending	Yes	Yes
	Emulation	Yes	Yes
	Daylight View	Daylight View Basic	Daylight View Basic
3D Ready	Yes	Yes	
DICOM Simulation Mode	Yes	Yes	
Portrait Mode	Yes	Yes	
Audio Out During Standby	Yes	Yes	
Accessory	Optional accessories	ET-PKR100H (High ceiling mount bracket) ET-PKR100S (Low ceiling mount bracket) ET-PKR100P (Portrait mode mount bracket) ET-YFB100G (Digital Interface Box)	ET-PKR100H (High ceiling mount bracket) ET-PKR100S (Low ceiling mount bracket) ET-PKR100P (Portrait mode mount bracket) ET-YFB100G (Digital Interface Box)
	Standard accessories	Power cord (with secure lock), wireless remote control unit, batteries for remote control unit, software CD-ROM (Logo Transfer Software, Multi Projector Monitoring and Control Software)	Power cord (with secure lock), wireless remote control unit, batteries for remote control unit, software CD-ROM (Logo Transfer Software, Multi Projector Monitoring and Control Software)

*1: Input signals that exceed the native resolution will be converted to the native resolution.

*2: The screen size is that of the original aspect ratio.

*3: Average value. Each product has an individual variable in weight.

PT-RW430



1-Chip DLP™ Projector

3,500 lm

WXGA

WIRED
LAN



* Available in white/black cabinet.

PT-RZ370



1-Chip DLP™ Projector

3,500 lm

Full HD

WIRED
LAN

PT-RW330



1-Chip DLP™ Projector

3,500 lm

WXGA

WIRED
LAN

16.5 mm (0.65 inches) DLP™ chip x 1	16.5 mm (0.65 inches) DLP™ chip x 1	16.5 mm (0.65 inches) DLP™ chip x 1
16:10	16:9	16:10
LED/Laser-combined (R, B: LED; G: Laser diode)	LED/Laser-combined (R, B: LED; G: Laser diode)	LED/Laser-combined (R, B: LED; G: Laser diode)
3,500 lm	3,500 lm	3,500 lm
F 2.0-3.4, f 21.5-43.0 mm (1.53-3.09:1)	F 2.0-3.4, f 21.5-43.0 mm (1.46-2.94:1)	F 2.0-3.4, f 21.5-43.0 mm (1.53-3.09:1)
20,000:1	10,000:1	10,000:1
WXGA (1,280 x 800)/WUXGA (1,920 x 1,200)	Full HD (1,920 x 1,080)/WUXGA (1,920 x 1,200)	WXGA (1,280 x 800)/WUXGA (1,920 x 1,200)
1.02-7.62 m (40-300 inches)	1.02-7.62 m (40-300 inches)	1.02-7.62 m (40-300 inches)
Vertical: +69%/−46 %, horizontal: +28%/−37 % (manual)	Vertical: +73%/−48 %, horizontal: +27%/−35 % (manual)	Vertical: +69%/−46 %, horizontal: +28%/−37 % (manual)
-	-	-
HDMI in [HDMI 19-pin x 1 (HDCP compatible)]	HDMI in [HDMI 19-pin x 1 (HDCP compatible)]	HDMI in [HDMI 19-pin x 1 (HDCP compatible)]
DVI-I in [DVI-I 29-pin x 1 (Digital: HDCP compatible) (Analog: RGB/YpPbPr/YCbCr x 1)]	DVI-I in [DVI-I 29-pin x 1 (Digital: HDCP compatible) (Analog: RGB/YpPbPr/YCbCr x 1)]	DVI-I in [DVI-I 29-pin x 1 (Digital: HDCP compatible) (Analog: RGB/YpPbPr/YCbCr x 1)]
Computer in [D-sub HD 15-pin x 1 (RGB/YpPbPr/YCbCr x 1)]	Computer in [D-sub HD 15-pin x 1 (RGB/YpPbPr/YCbCr x 1)]	Computer in [D-sub HD 15-pin x 1 (RGB/YpPbPr/YCbCr x 1)]
Composite video in [Pin jack x 1]	Composite video in [Pin jack x 1]	Composite video in [Pin jack x 1]
Audio in [M3 x 1 (L-R x 1)]	Audio in [M3 x 1 (L-R x 1)]	Audio in [M3 x 1 (L-R x 1)]
Audio out [M3 x 1 (L-R x 1)]	Audio out [M3 x 1 (L-R x 1)]	Audio out [M3 x 1 (L-R x 1)]
Serial in [D-sub 9-pin x 1 (RS-232C)]	Serial in [D-sub 9-pin x 1 (RS-232C)]	Serial in [D-sub 9-pin x 1 (RS-232C)]
LAN/DIGITAL LINK [RJ-45 x 1, for network/DIGITAL LINK connection, 100Base-TX, HDCP compatible]	LAN/DIGITAL LINK [RJ-45 x 1, for network/DIGITAL LINK connection, 100Base-TX, HDCP compatible]	LAN/DIGITAL LINK [RJ-45 x 1, for network/DIGITAL LINK connection, 100Base-TX, HDCP compatible]
3D SYNC out [Mini Din 3pin x 1 (for 3D Transmitter connection)]		
100-240 V AC, 5.2-2.0 A, 50/60 Hz	100-240 V AC, 5.2-2.0 A, 50/60 Hz	100-240 V AC, 5.2-2.0 A, 50/60 Hz
460 W (Normal: 250 W, ECO1: 200 W, ECO2: 178 W) ^{*4}	460 W (Normal: 250 W, ECO1: 200 W, ECO2: 178 W) ^{*4}	460 W (Normal: 250 W, ECO1: 200 W, ECO2: 178 W) ^{*4}
455 x 137 ^{*5} x 415 mm ^{*6} (17-29/32 x 5-13/32 ^{*5} x 16-11/32 inches) ^{*6}	455 x 137 ^{*5} x 415 mm ^{*6} (17-29/32 x 5-13/32 ^{*5} x 16-11/32 inches) ^{*6}	455 x 137 ^{*5} x 415 mm ^{*6} (17-29/32 x 5-13/32 ^{*5} x 16-11/32 inches) ^{*6}
Approx. 11.0 kg/24.3 lbs	Approx. 11.0 kg/24.3 lbs	Approx. 11.0 kg/24.3 lbs
20,000 hours ^{*7}	20,000 hours ^{*7}	20,000 hours ^{*7}
Yes	-	-
Yes	Yes	Yes
Daylight View Basic	Daylight View Basic	Daylight View Basic
Yes	-	-
Yes	Yes	Yes
Yes	-	-
Yes	Yes	Yes
ET-PKR100H (High ceiling mount bracket)	ET-PKR100H (High ceiling mount bracket)	ET-PKR100H (High ceiling mount bracket)
ET-PKR100S (Low ceiling mount bracket)	ET-PKR100S (Low ceiling mount bracket)	ET-PKR100S (Low ceiling mount bracket)
ET-PKR100P (Portrait mode mount bracket)	ET-YFB100G (Digital Interface Box)	ET-YFB100G (Digital Interface Box)
ET-YFB100G (Digital Interface Box)		
Power cord (with secure lock), wireless remote control unit, batteries for remote control unit, software CD-ROM (Logo Transfer Software, Multi Projector Monitoring and Control Software)	Power cord (with secure lock), wireless remote control unit, batteries for remote control unit, software CD-ROM (Logo Transfer Software, Multi Projector Monitoring and Control Software)	Power cord (with secure lock), wireless remote control unit, batteries for remote control unit, software CD-ROM (Logo Transfer Software, Multi Projector Monitoring and Control Software)

*4: In STANDARD/GRAPHIC picture mode. Measured based on the power consumption rate and a measurement method for the TV receiver. *5: Height: with legs at shortest position. *6: Depth: including the lens.

*7: A guideline for light source replacement. The maintenance-free duration may be shortened due to environmental conditions. 16

Installation

PT-EZ770Z
PT-EZ770ZL*4



LCD Projector
6,500 lm WUXGA WIRELESS LAN

PT-EW730Z
PT-EW730ZL*4



LCD Projector
7,000 lm WXGA WIRELESS LAN

Optical	Panel type	19.0 mm (0.76 inches) LCD x 3	19.0 mm (0.76 inches) LCD x 3	
	Aspect ratio	16:10	16:10	
Interface	Lamp	400 W UHM	400 W UHM	
	Brightness	6,500 lm	7,000 lm	
	Lens (throw ratio)	F 1.7-2.3, f 26.9-45.4 mm (1.7-2.8:1) (PT-EZ770Z)	F 1.7-2.3, f 26.9-45.4 mm (1.7-2.8:1) (PT-EW730Z)	
	Contrast (full on/full off)	5,000:1	5,000:1	
	Resolution native/maximum*1	WUXGA (1,920 x 1,200)	WXGA (1,280 x 800)/WUXGA (1,920 x 1,200)	
	Screen size (diagonal)**2	1.02-10.16 m (40-400 inches)	1.02-10.16 m (40-400 inches)	
	Lens shift	Vertical: ±60 %, horizontal: ±10 % [powered]	Vertical: ±60 %, horizontal: ±10 % [powered]	
General	Built-in speaker	10.0 W (monaural)	10.0 W (monaural)	
	Terminals	DVI-D in [DVI-D 24-pin x 1 (HDCP compatible)] HDMI in [HDMI 19-pin x 1 (HDCP compatible)] DisplayPort IN [DP-20P x 1 (DisplayPort 1.1, HDCP compatible)] RGB 1 in [D-sub HD 15-pin x 1 (RGB/YpPr/YCbCr x 1)] RGB 2 in [BNC x 5 (RGB/YpPr/YCbCr x 1)] Composite video in [Pin jack x 1] Monitor out [D-sub HD 15-pin x 1 (RGB x 1)] Audio in 1 [M3 x 1 (L-R x 1)] Audio in 2 [M3 x 1 (L-R x 1)] Audio in 3 [Pin jack x 2 (L x 1, R x 1)] Audio out [M3 x 1 (L-R x 1)] Serial in [D-sub 9-pin x 1 (RS-232C)] Remote 1 in [M3 x 1] Remote 2 in [D-sub 9-pin x 1] LAN/DIGITAL LINK [RJ-45 x 1, for network/DIGITAL LINK connection, 100Base-TX, HDCP compatible]	DVI-D in [DVI-D 24-pin x 1 (HDCP compatible)] HDMI in [HDMI 19-pin x 1 (HDCP compatible)] DisplayPort IN [DP-20P x 1 (DisplayPort 1.1, HDCP compatible)] RGB 1 in [D-sub HD 15-pin x 1 (RGB/YpPr/YCbCr x 1)] RGB 2 in [BNC x 5 (RGB/YpPr/YCbCr x 1)] Composite video in [Pin jack x 1] Monitor out [D-sub HD 15-pin x 1 (RGB x 1)] Audio in 1 [M3 x 1 (L-R x 1)] Audio in 2 [M3 x 1 (L-R x 1)] Audio in 3 [Pin jack x 2 (L x 1, R x 1)] Audio out [M3 x 1 (L-R x 1)] Serial in [D-sub 9-pin x 1 (RS-232C)] Remote 1 in [M3 x 1] Remote 2 in [D-sub 9-pin x 1] LAN/DIGITAL LINK [RJ-45 x 1, for network/DIGITAL LINK connection, 100Base-TX, HDCP compatible]	
	Power supply	100-240 V AC, 50/60 Hz	100-240 V AC, 50/60 Hz	
	Power consumption	590 W	575 W	
	Dimensions (W x H x D)	530 x 177*5 x 445 mm*6*7 [20-7/8 x 6-31/32*5 x 17-1/2 inches]*6*7	530 x 177*5 x 445 mm*6*7 [20-7/8 x 6-31/32*5 x 17-1/2 inches]*6*7	
	Weight*3	Approx. 10.6 kg/23.4 lbs (PT-EZ770ZL: approx. 9.8 kg/21.6 lbs)	Approx. 10.6 kg/23.4 lbs (PT-EW730ZL: approx. 9.8 kg/21.6 lbs)	
	Features	Filter	Eco Filter	Eco Filter
		Intelligent Lamp Control	Yes	Yes
		Emulation	Yes	Yes
		Daylight View	Daylight View Basic	Daylight View Basic
DICOM Simulation Mode		Yes	Yes	
Corner Keystone		Yes	Yes	
Accessory	P-in-P/Side-by-Side	P-in-P/Side-by-Side	P-in-P/Side-by-Side	
	Audio Out During Standby	Yes	Yes	
	Replacement lamp	ET-LAE300	ET-LAE300	
	Optional accessories	ET-PKE200H (High ceiling mount bracket) ET-PKE200S (Low ceiling mount bracket) ET-PKE200B (Bracket assembly) ET-RFE300 (Replacement filter unit) ET-YFB100G (Digital Interface Box)	ET-PKE200H (High ceiling mount bracket) ET-PKE200S (Low ceiling mount bracket) ET-PKE200B (Bracket assembly) ET-RFE300 (Replacement filter unit) ET-YFB100G (Digital Interface Box)	
Optional lens	ET-ELW20 (Zoom lens, 1.3-1.7:1) ET-ELT20 (Zoom lens, 2.8-4.6:1) ET-ELT21 (Zoom lens, 4.6-7.2:1) ET-ELW21 (Fixed-focus lens, 0.8:1)	ET-ELW20 (Zoom lens, 1.3-1.7:1) ET-ELT20 (Zoom lens, 2.8-4.6:1) ET-ELT21 (Zoom lens, 4.6-7.2:1) ET-ELW21 (Fixed-focus lens, 0.8:1)		
Standard accessories	Power cord with power cord holder, wireless/wired remote control unit, batteries for remote control unit, software CD-ROM (Logo Transfer Software, Multi Projector Monitoring and Control Software)	Power cord with power cord holder, wireless/wired remote control unit, batteries for remote control unit, software CD-ROM (Logo Transfer Software, Multi Projector Monitoring and Control Software)		

*1: Input signals that exceed the native resolution will be converted to the native resolution.

*2: The screen size is that of the original aspect ratio. *3: Average value. Each product has an individual variable in weight.

PT-EX800Z
PT-EX800ZL*4



LCD Projector



7,500 lm XGA

20.0 mm (0.79 inches) LCD x 3
4:3
400 W UHM
7,500 lm
F 1.7-2.3, f 26.9-45.4 mm (1.7-2.8:1) (PT-EX800Z)
5,000:1
XGA (1,024 x 768)/WUXGA (1,920 x 1,200)
1.02-10.16 m (40-400 inches)
Vertical: ±50 %, horizontal: ±10 % (powered)
10.0 W (monaural)
DVI-D in [DVI-D 24-pin x 1 (DVI-D x 1 (HDCP compatible))]
HDMI in [HDMI 19-pin x 1 (HDCP compatible)]
DisplayPort IN [DP-20P x 1 (DisplayPort 1.1, HDCP compatible)]
RGB 1 in [D-sub HD 15-pin x 1 (RGB/YPbPr/YCbCr x 1)]
RGB 2 in [BNC x 5 (RGB/YPbPr/YCbCr x 1)]
Composite video in [Pin jack x 1]
Monitor out [D-sub HD 15-pin x 1 (RGB x 1)]
Audio in 1 [M3 x 1 (L-R x 1)]
Audio in 2 [M3 x 1 (L-R x 1)]
Audio in 3 [Pin jack x 2 (L x 1, R x 1)]
Audio out [M3 x 1 (L-R x 1)]
Serial in [D-sub 9-pin x 1 (RS-232C)]
Remote 1 in [M3 x 1]
Remote 2 in [D-sub 9-pin x 1]
LAN/DIGITAL LINK
[RJ-45 x 1, for network/DIGITAL LINK connection, 100Base-TX, HDCP compatible]
100-240 V AC, 50/60 Hz
575 W
530 x 177*5 x 445 mm*6*7
[20-7/8 x 6-31/32*5 x 17-1/2 inches]*6*7
Approx. 10.6 kg/23.4 lbs
(PT-EX800ZL: approx. 9.8 kg/21.6 lbs)
Eco Filter
Yes
Yes
Daylight View Basic
Yes
Yes
P-in-P/Side-by-Side
Yes
ET-LAE300
ET-PKE200H (High ceiling mount bracket)
ET-PKE200S (Low ceiling mount bracket)
ET-PKE200B (Bracket assembly)
ET-RFE300 (Replacement filter unit)
ET-YFB100G (Digital Interface Box)
ET-ELW20 (Zoom lens, 1.3-1.7:1)
ET-ELT20 (Zoom lens, 2.8-4.6:1)
ET-ELT21 (Zoom lens, 4.6-7.2:1)
ET-ELW21 (Fixed-focus lens, 0.8:1)
Power cord with power cord holder, wireless/wired remote control unit, batteries for remote control unit, software CD-ROM (Logo Transfer Software, Multi Projector Monitoring and Control Software)

Key Features

Panasonic's Leading-Edge Technology

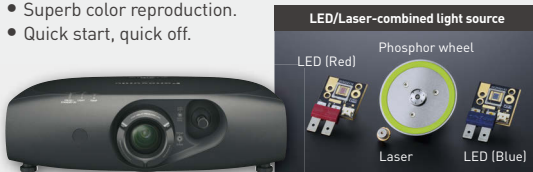
SOLID SHINE Illumination
- Going Beyond Conventional Projectors



With the newly developed LED/Laser-combined light source, SOLID SHINE Series projectors provide solid reliability and long-lasting brightness unprecedented by conventional lamp-based projectors.

Advantages

- Approx. 20,000 hours* of maintenance-free operation. (PT-RZ470/RW430/RZ370/RW330)
- Long-lasting reliability and brightness.
- Superb color reproduction.
- Quick start, quick off.



* A guideline for light source replacement. The maintenance-free duration may be shortened due to environmental conditions.

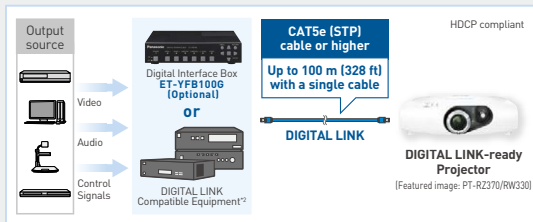


DIGITAL LINK - Single Cable Solution

DIGITAL LINK, based on HDBaseT™ technology, is an intelligent system that lets you send HDMI, uncompressed Full-HD videos, audio, and control signals*1 all through a single CAT5e cable or higher for up to 100 m (328 ft). Hence, it is a cost-effective, long-distance, high-quality digital transmission solution.

Advantages

- High-quality digital transmission over a single cable.
- A cost effective approach to cabling and layout.
- Supports the control protocol of the industry's leading manufacturers.



*1: The ET-YFB100G does not accept direct RS-232C commands. It accepts commands only through DIGITAL LINK projectors. The only available control via the projector is to change the input terminal of the ET-YFB100G.

*2: For tested compatible equipment, please visit the website.

panasonic.net/avc/projector/support/digitalink_compatible_list/

Note: For models supporting the above functions, please refer to the "Features" section of each specification sheet.

*4: Lens-less model. *5: Height: with legs at shortest position.

*6: Depth: including the lens. *7: Depth: 385 mm (15-5/32 inches) for the lens-less models.

Large-Venue

Installation

Portable

Short Throw

Home Cinema

Installation

PT-EZ580
PT-EZ580L*4



LCD Projector
5,400 lm WUXGA WIRED LAN

PT-EW640
PT-EW640L*4



LCD Projector
5,800 lm WXGA WIRED LAN

Optical	Panel type	19.0 mm (0.76 inches) LCD x 3	19.0 mm (0.76 inches) LCD x 3
	Aspect ratio	16:10	16:10
Interface	Lamp	335 W UHM	335 W UHM
	Brightness	5,400 lm	5,800 lm
	Lens (throw ratio)	F 1.7-2.3, f 26.9-45.4 mm (1.7-2.8:1) [PT-EZ580]	F 1.7-2.3, f 26.9-45.4 mm (1.7-2.8:1) [PT-EW640]
	Contrast (full on/full off)	5,000:1	5,000:1
	Resolution native/maximum*1	WUXGA (1,920 x 1,200)	WXGA (1,280 x 800)/WUXGA (1,920 x 1,200)
	Screen size (diagonal)*2	1.02-10.16 m (40-400 inches)	1.02-10.16 m (40-400 inches)
	Lens shift	Vertical: ±60 %, horizontal: ±10 % [powered]	Vertical: ±60 %, horizontal: ±10 % [powered]
	Built-in speaker	10.0 W (monaural)	10.0 W (monaural)
	Terminals	DVI-D in [DVI-D 24-pin x 1 (DVI-D x 1 (HDCP compatible))]	DVI-D in [DVI-D 24-pin x 1 (DVI-D x 1 (HDCP compatible))]
		HDMI in [HDMI 19-pin x 1 (HDCP compatible)] DisplayPort IN [DP-20P x 1 (DisplayPort 1.1, HDCP compatible)] RGB 1 in [D-sub HD 15-pin x 1 (RGB/YpPr/YCbCr x 1)] RGB 2 in [BNC x 5 (RGB/YpPr/YCbCr x 1)] Composite video in [Pin jack x 1] Monitor out [D-sub HD 15-pin x 1 (RGB x 1)] Audio in 1 [M3 x 1 (L-R x 1)] Audio in 2 [M3 x 1 (L-R x 1)] Audio in 3 [Pin jack x 2 (L x 1, R x 1)] Audio out [M3 x 1 (L-R x 1)] Serial in [D-sub 9-pin x 1 (RS-232C)] Remote 1 in [M3 x 1] Remote 2 in [D-sub 9-pin x 1] LAN/DIGITAL LINK [RJ-45 x 1, for network/DIGITAL LINK connection, 100Base-TX, HDCP compatible]	HDMI in [HDMI 19-pin x 1 (HDCP compatible)] DisplayPort IN [DP-20P x 1 (DisplayPort 1.1, HDCP compatible)] RGB 1 in [D-sub HD 15-pin x 1 (RGB/YpPr/YCbCr x 1)] RGB 2 in [BNC x 5 (RGB/YpPr/YCbCr x 1)] Composite video in [Pin jack x 1] Monitor out [D-sub HD 15-pin x 1 (RGB x 1)] Audio in 1 [M3 x 1 (L-R x 1)] Audio in 2 [M3 x 1 (L-R x 1)] Audio in 3 [Pin jack x 2 (L x 1, R x 1)] Audio out [M3 x 1 (L-R x 1)] Serial in [D-sub 9-pin x 1 (RS-232C)] Remote 1 in [M3 x 1] Remote 2 in [D-sub 9-pin x 1] LAN/DIGITAL LINK [RJ-45 x 1, for network/DIGITAL LINK connection, 100Base-TX, HDCP compatible]
General	Power supply	100-240 V AC, 50/60 Hz	100-240 V AC, 50/60 Hz
	Power consumption	510 W	495 W
	Dimensions (W x H x D)	530 x 177*5 x 445 mm*6*7 [20-7/8 x 6-31/32*5 x 17-1/2 inches]*6*7	530 x 177*5 x 445 mm*6*7 [20-7/8 x 6-31/32*5 x 17-1/2 inches]*6*7
	Weight*3	Approx. 10.6 kg/23.4 lbs [PT-EZ580L: approx. 9.8 kg/21.6 lbs]	Approx. 10.6 kg/23.4 lbs [PT-EW640L: approx. 9.8 kg/21.6 lbs]
Features	Filter	Eco Filter	Eco Filter
	Intelligent Lamp Control	Yes	Yes
	Emulation	Yes	Yes
	Daylight View	Daylight View Basic	Daylight View Basic
	DICOM Simulation Mode	Yes	Yes
	Corner Keystone	Yes	Yes
	P-in-P/Side-by-Side	P-in-P/Side-by-Side	P-in-P/Side-by-Side
Audio Out During Standby	Yes	Yes	
Accessory	Replacement lamp	ET-LAE300	ET-LAE300
	Optional accessories	ET-PKD120H (High ceiling mount bracket)	ET-PKD120H (High ceiling mount bracket)
		ET-PKD120S (Low ceiling mount bracket)	ET-PKD120S (Low ceiling mount bracket)
		ET-PKE300B (Bracket assembly)	ET-PKE300B (Bracket assembly)
		ET-PKE200B*8 (Bracket assembly)	ET-PKE200B*8 (Bracket assembly)
		ET-RFE300 (Replacement filter unit)	ET-RFE300 (Replacement filter unit)
	ET-YFB100G (Digital Interface Box)	ET-YFB100G (Digital Interface Box)	
	Optional lens	ET-ELW20 (Zoom lens, 1.3-1.7:1)	ET-ELW20 (Zoom lens, 1.3-1.7:1)
		ET-ELT20 (Zoom lens, 2.8-4.6:1)	ET-ELT20 (Zoom lens, 2.8-4.6:1)
		ET-ELT21 (Zoom lens, 4.6-7.2:1)	ET-ELT21 (Zoom lens, 4.6-7.2:1)
ET-ELW21 (Fixed-focus lens, 0.8:1)		ET-ELW21 (Fixed-focus lens, 0.8:1)	
Standard accessories	Power cord with power cord holder, wireless/wired remote control unit, batteries for remote control unit, software CD-ROM (Logo Transfer Software, Multi Projector Monitoring and Control Software)	Power cord with power cord holder, wireless/wired remote control unit, batteries for remote control unit, software CD-ROM (Logo Transfer Software, Multi Projector Monitoring and Control Software)	

*1: Input signals that exceed the native resolution will be converted to the native resolution.

*2: The screen size is that of the original aspect ratio. *3: Average value. Each product has an individual variable in weight.

PT-EW540 **NEW**
PT-EW540L*4

LCD Projector **WIRED LAN**
 5,000 lm WXGA

19.0 mm (0.76 inches) LCD x 3
4:3
335 W UHM
5,000 lm
F 1.7-2.3, f 26.9-45.4 mm (1.7-2.8:1) (PT-EW540)
2,000:1
WXGA (1,280 x 800)/WUXGA (1,920 x 1,200)
1.02-10.16 m (40-400 inches)
Vertical: ±60 %, horizontal: ±10 % [powered]
10.0 W (monaural)
DVI-D in [DVI-D 24-pin x 1 (HDCP compatible)]
HDMI in [HDMI 19-pin x 1 (HDCP compatible)]
RGB 1 in [D-sub HD 15-pin x 1 (RGB/YPbPr/YCbCr x 1)]
RGB 2 in [BNC x 5 (RGB/YPbPr/YCbCr x 1)]
Composite video in [Pin jack x 1]
Monitor out [D-sub HD 15-pin x 1 (RGB x 1)]
Audio in 1 [M3 x 1 (L-R x 1)]
Audio in 2 [M3 x 1 (L-R x 1)]
Audio in 3 [Pin jack x 2 (L x 1, R x 1)]
Audio out [M3 x 1 (L-R x 1)]
Serial in [D-sub 9-pin x 1 (RS-232C)]
Remote 1 in [M3 x 1]
Remote 2 in [D-sub 9-pin x 1]
LAN [RJ-45 x 1 (10Base-T/100Base-TX)]

100-240 V AC, 50/60 Hz
485 W
530 x 177*5 x 445 mm*6*7
[20-7/8 x 6-31/32*5 x 17-1/2 inches]*6*7
Approx. 10.6 kg/23.4 lbs
(PT-EW540L: approx. 9.8 kg/21.6 lbs)

Eco Filter
Yes
Yes
Daylight View Basic
Yes
Yes
P-in-P/Side-by-Side
Yes

ET-LAE300
ET-PKD120H (High ceiling mount bracket)
ET-PKD120S (Low ceiling mount bracket)
ET-PKE300B (Bracket assembly)
ET-PKE200B*8 (Bracket assembly)
ET-RFE300 (Replacement filter unit)

ET-ELW20 (Zoom lens, 1.3-1.7:1)
ET-ELT20 (Zoom lens, 2.8-4.6:1)
ET-ELT21 (Zoom lens, 4.6-7.2:1)
ET-ELW21 (Fixed-focus lens, 0.8:1)

Power cord with power cord holder, wireless/wired remote control unit, batteries for remote control unit, software CD-Rom (Logo Transfer Software, Multi Projector Monitoring and Control Software)

PT-EX610 **NEW**
PT-EX610L*4 **DIGITAL LINK**

LCD Projector **WIRED LAN**
 6,200 lm XGA

20.0 mm (0.79 inches) LCD x 3
4:3
335 W UHM
6,200 lm
F 1.7-2.3, f 26.9-45.4 mm (1.7-2.8:1) (PT-EX610)
5,000:1
XGA (1,024 x 768)/WUXGA (1,920 x 1,200)
1.02-10.16 m (40-400 inches)
Vertical: ±50 %, horizontal: ±10 % [powered]
10.0 W (monaural)
DVI-D in [DVI-D 24-pin x 1 (HDCP compatible)]
HDMI in [HDMI 19-pin x 1 (HDCP compatible)]
DisplayPort In [DP-20P x 1 (DisplayPort 1.1, HDCP compatible)]
RGB 1 in [D-sub HD 15-pin x 1 (RGB/YPbPr/YCbCr x 1)]
RGB 2 in [BNC x 5 (RGB/YPbPr/YCbCr x 1)]
Composite video in [Pin jack x 1]
Monitor out [D-sub HD 15-pin x 1 (RGB x 1)]
RGB 1 in [D-sub HD 15-pin x 1 (RGB/YPbPr/YCbCr x 1)]
Audio in 3 [Pin jack x 2 (L x 1, R x 1)]
Audio out [M3 x 1 (L-R x 1)]
Serial in [D-sub 9-pin x 1 (RS-232C)]
Remote 1 in [M3 x 1]
Remote 2 in [D-sub 9-pin x 1]
LAN/DIGITAL LINK
[RJ-45 x 1, for network/DIGITAL LINK connection, 100Base-TX, HDCP compatible]

100-240 V AC, 50/60 Hz
495 W
530 x 177*5 x 445 mm*6*7
[20-7/8 x 6-31/32*5 x 17-1/2 inches]*6*7
Approx. 10.6 kg/23.4 lbs
(PT-EX610L: approx. 9.8 kg/21.6 lbs)

Eco Filter
Yes
Yes
Daylight View Basic
Yes
Yes
P-in-P/Side-by-Side
Yes

ET-LAE300
ET-PKD120H (High ceiling mount bracket)
ET-PKD120S (Low ceiling mount bracket)
ET-PKE300B (Bracket assembly)
ET-PKE200B*8 (Bracket assembly)
ET-RFE300 (Replacement filter unit)
ET-YFB100G (Digital Interface Box)

ET-ELW20 (Zoom lens, 1.3-1.7:1)
ET-ELT20 (Zoom lens, 2.8-4.6:1)
ET-ELT21 (Zoom lens, 4.6-7.2:1)
ET-ELW21 (Fixed-focus lens, 0.8:1)

Power cord with power cord holder, wireless/wired remote control unit, batteries for remote control unit, software CD-Rom (Logo Transfer Software, Multi Projector Monitoring and Control Software)

PT-EX510 **NEW**
PT-EX510L*4

LCD Projector **WIRED LAN**
 5,300 lm XGA

20.0 mm (0.79 inches) LCD x 3
4:3
335 W UHM
5,300 lm
F 1.7-2.3, f 26.9-45.4 mm (1.7-2.8:1) (PT-EX510)
2,000:1
XGA (1,024 x 768)/WUXGA (1,920 x 1,200)
1.02-10.16 m (40-400 inches)
Vertical: ±50 %, horizontal: ±10 % [powered]
10.0 W (monaural)
DVI-D in [DVI-D 24-pin x 1 (HDCP compatible)]
HDMI in [HDMI 19-pin x 1 (HDCP compatible)]
RGB 1 in [D-sub HD 15-pin x 1 (RGB/YPbPr/YCbCr x 1)]
RGB 2 in [BNC x 5 (RGB/YPbPr/YCbCr x 1)]
Composite video in [Pin jack x 1]
Monitor out [D-sub HD 15-pin x 1 (RGB x 1)]
Audio in 1 [M3 x 1 (L-R x 1)]
Audio in 2 [M3 x 1 (L-R x 1)]
Audio in 3 [Pin jack x 2 (L x 1, R x 1)]
Audio out [M3 x 1 (L-R x 1)]
Serial in [D-sub 9-pin x 1 (RS-232C)]
Remote 1 in [M3 x 1]
Remote 2 in [D-sub 9-pin x 1]
LAN [RJ-45 x 1 (10Base-T/100Base-TX)]

100-240 V AC, 50/60 Hz
485 W
530 x 177*5 x 445 mm*6*7
[20-7/8 x 6-31/32*5 x 17-1/2 inches]*6*7
Approx. 10.6 kg/23.4 lbs
(PT-EX510L: approx. 9.8 kg/21.6 lbs)

Eco Filter
Yes
Yes
Daylight View Basic
Yes
Yes
P-in-P/Side-by-Side
Yes

ET-LAE300
ET-PKD120H (High ceiling mount bracket)
ET-PKD120S (Low ceiling mount bracket)
ET-PKE300B (Bracket assembly)
ET-PKE200B*8 (Bracket assembly)
ET-RFE300 (Replacement filter unit)

ET-ELW20 (Zoom lens, 1.3-1.7:1)
ET-ELT20 (Zoom lens, 2.8-4.6:1)
ET-ELT21 (Zoom lens, 4.6-7.2:1)
ET-ELW21 (Fixed-focus lens, 0.8:1)

Power cord with power cord holder, wireless/wired remote control unit, batteries for remote control unit, software CD-Rom (Logo Transfer Software, Multi Projector Monitoring and Control Software)

*4: Lens-less model. *5: Height: with legs at shortest position. *6: Depth: including the lens.

*7: Depth: 385 mm (15-5/32 inches) for the lens-less models. *8: Compatible with ET-PKE200H and ET-PKE200S.

Installation



PT-FW430



LCD Projector
3,500 lm WXGA   option⁴

PT-FX400



LCD Projector
4,000 lm XGA   option⁴

Optical	Panel type	18.9 mm (0.74 inches) LCD x 3	20.3 mm (0.8 inches) LCD x 3
	Aspect ratio	16:10	4:3
	Lamp	250 W UHM	250 W UHM
	Brightness	3,500 lm	4,000 lm
	Lens (throw ratio)	F 1.7-2.6, f 21.6-43.0 mm (1.34-2.68:1)	F 1.7-2.6, f 24.0-47.2 mm (1.48-2.96:1)
	Contrast (full on/full off)	600:1	600:1
	Resolution native/maximum*1	WXGA (1,280 x 800)/WUXGA (1,920 x 1,200)	XGA (1,024 x 768)/WUXGA (1,920 x 1,200)
	Screen size (diagonal)**2	0.84-7.62 m [33-300 inches]	0.84-7.62 m [33-300 inches]
	Lens shift	Vertical ±51 %, horizontal ±24 % [manual]	Vertical ±50 %, horizontal ±27 % [manual]
Interface	Built-in speaker	5.0 W (monaural)	5.0 W (monaural)
	Terminals	HDMI in [HDMI 19-pin x 1 (HDCP compatible)] DVI-I in [DVI-I 29-pin x 1 (Digital: HDCP compatible) (Analog: RGB/YpPr/YCbCr x 1)] Computer in [D-sub HD 15-pin x 1 (RGB/YpPr/YCbCr x 1)] Composite video in [Pin jack x 1] S-Video in [Mini-DIN 4-pin x 1] Audio in 1 [M3 x 1 (L-R x 1)] Audio in 2 [M3 x 1 (L-R x 1)] Audio in 3 [Pin jack x 2 (L x 1, R x 1)] Audio out [M3 x 1 (L-R x 1)] Serial in [D-sub 9-pin x 1 (RS-232C)] LAN [RJ-45 x 1 (10Base-T/100Base-TX)] Wireless module input terminal [for optional ET-WM200 x 1]	HDMI in [HDMI 19-pin x 1 (HDCP compatible)] DVI-I in [DVI-I 29-pin x 1 (Digital: HDCP compatible) (Analog: RGB/YpPr/YCbCr x 1)] Computer in [D-sub HD 15-pin x 1 (RGB/YpPr/YCbCr x 1)] Composite video in [Pin jack x 1] S-Video in [Mini-DIN 4-pin x 1] Audio in 1 [M3 x 1 (L-R x 1)] Audio in 2 [M3 x 1 (L-R x 1)] Audio in 3 [Pin jack x 2 (L x 1, R x 1)] Audio out [M3 x 1 (L-R x 1)] Serial in [D-sub 9-pin x 1 (RS-232C)] LAN [RJ-45 x 1 (10Base-T/100Base-TX)] Wireless module input terminal [for optional ET-WM200 x 1]
	Power supply	100-240 V AC, 3.9-1.4 A, 50/60 Hz	100-240 V AC, 3.9-1.4 A, 50/60 Hz
	Power consumption	330 W	330 W
	Dimensions (W x H x D)	430 x 125.5 ⁵ x 323 mm [16-15/16 x 4-15/16 ⁵ x 12-23/32 inches]	430 x 125.5 ⁵ x 323 mm [16-15/16 x 4-15/16 ⁵ x 12-23/32 inches]
	Weight**3	Approx. 6.0 kg/13.2 lbs	Approx. 6.0 kg/13.2 lbs
	Filter	Eco Filter	Eco Filter
	Emulation	Yes	Yes
	Daylight View	Daylight View Premium	Daylight View Premium
	Detail Clarity Processor	Detail Clarity Processor 3	Detail Clarity Processor 3
DICOM Simulation Mode	-	-	
Corner Keystone	-	-	
P-in-P/Side-by-Side	Side-by-Side	-	
Wireless Ready	Wireless Manager ME 6.0 ⁴ , iOS ⁴ , Android ⁴	Wireless Manager ME 6.0 ⁴ , iOS ⁴ , Android ⁴	
Audio Out During Standby	Yes	Yes	
Accessory	Replacement lamp	ET-LAF100A	ET-LAF100A
	Optional accessories	ET-PKF110H (High ceiling mount bracket) ET-PKF110S (Low ceiling mount bracket) ET-EMF100 (Replacement filter unit) ET-WM200 (Wireless module)	ET-PKF110H (High ceiling mount bracket) ET-PKF110S (Low ceiling mount bracket) ET-EMF100 (Replacement filter unit) ET-WM200 (Wireless module)
	Standard accessories	Power cord, wireless remote control unit, batteries for remote control unit, software CD-ROM [Logo Transfer Software, Multi Projector Monitoring and Control Software, Wireless Manager ME 6.0]	Power cord, wireless remote control unit, batteries for remote control unit, software CD-ROM [Logo Transfer Software, Multi Projector Monitoring and Control Software, Wireless Manager ME 6.0]

*1: Input signals that exceed the native resolution will be converted to the native resolution.

*2: The screen size is that of the original aspect ratio.

*3: Average value. Each product has an individual variable in weight.

PT-LZ370



LCD Projector
3,000 lm Full HD **WIRED LAN**

18.7 mm (0.74 inches) LCD x 3
16:9
280 W UHM
3,000 lm
F 2.0-3.4, f 21.5-43.0 mm (1.33-2.69:1)
10,000:1
Full HD (1,920 x 1,080)/WUXGA (1,920 x 1,200)
1.02-7.62 m (40-300 inches)
Vertical $\pm 65\%$, horizontal $\pm 26\%$ (manual)
-
HDMI in [HDMI 19-pin x 2 (HDCP compatible)]
Computer in [D-sub HD 15-pin x 1 (RGB/YpPr/YCbCr x 1)]
Component in [Pin jack x 3 (YPbPr/YCbCr x 1)]
Composite video in [Pin jack x 1]
S-Video in [Mini-DIN 4-pin x 1]
Audio in [M3 x 1 (L-R x 1)]
Audio out [M3 x 1 (L-R x 1)]
Serial in [D-sub 9-pin x 1 (RS-232C)]
LAN [RJ-45 x 1 (10Base-T/100Base-TX)]

100-240 V AC, 50/60 Hz
350 W
470 x 151^{*5} x 380 mm
(18-17/32 x 5-15/16^{*5} x 14-31/32 inches)
Approx. 8.6 kg/19.0 lbs

Micro Cut Filter
Yes
Daylight View Premium
Detail Clarity Processor 3
Yes
-
-
-
Yes

ET-LAA110
ET-PKA110H (High ceiling mount bracket)
ET-PKA110S (Low ceiling mount bracket)

Power cord, wireless remote control unit, batteries for remote control unit, software CD-ROM (Logo Transfer Software, Multi Projector Monitoring and Control Software)

*4: To operate wireless projection, the optional wireless module ET-WM200 is required.
*5: Height: with legs at shortest position.

Key Features

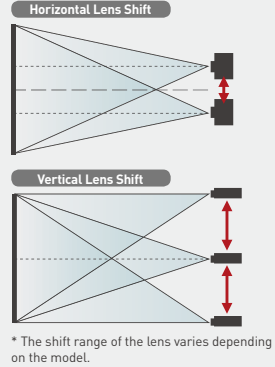
Features for Flexible Installation/ Maintaining Long-Lasting Image Quality

Lens Shift Function

Horizontal/vertical lens shift lets you accommodate a wide range of room sizes and shapes without distorting projected images.

Advantages

- When lights or ventilation holes are located in the ceiling mounting site, you can simply relocate the projector to avoid them.
- When replacing existing projectors, this can reduce costs by permitting the use of existing mounting positions and cables.



Note: Please refer to the "Optical" section for models supporting the above functions.

Eco Filter

Eco Filter efficiently captures dust and requires no replacement for long periods of time. And, as an environmental consideration, the filter can be washed with water and reused.*

Advantages

- Reduces maintenance cost and time.
- Dust resistant design keeps the air inside the projector clean for long periods of time and minimizes brightness degradation.



Featured image is for the PT-FW430 Series.

* When washing with water, please follow the procedures listed in the operating instructions. Also, we recommend replacing the filter with a new one after it has been washed and reused twice. If the filter is not sufficiently clean after washing, replace it with a new one.

Note: Please refer to the "Features" section for models supporting the above functions.

Inorganic Panel

The LCD panels inside the LCD projector's optical block tend to degrade over time. Their degradation adversely affects image quality. Inorganic materials are used for the LCD panels to resist time-related changes in the optical block.

Advantages

- The projector's optical block maintains a high level of performance and image quality over time.

Portable

PT-VW431D



LCD Projector
4,300 lm WXGA WIRELESS LAN

PT-VW440



LCD Projector
4,800 lm WXGA WIRELESS LAN

Optical	Panel type	15.0 mm (0.59 inches) LCD x 3	15.0 mm (0.59 inches) LCD x 3
	Aspect ratio	16:10	16:10
	Lamp	280 W UHM	280 W UHM
	Brightness	4,300 lm	4,800 lm
	Lens (throw ratio)	F 1.60-2.12, f 15.28-24.62 mm (1.18-1.90:1)	F 1.60-2.12, f 15.28-24.62 mm (1.18-1.90:1)
	Contrast (full on/full off)	3,500:1	3,500:1
	Resolution native/maximum*1	WXGA (1,280 x 800)/WUXGA (1,920 x 1,200)	WXGA (1,280 x 800)/WUXGA (1,920 x 1,200)
	Screen size (diagonal)**2	0.76-7.62 m (30-300 inches)	0.76-7.62 m (30-300 inches)
	Lens shift	Vertical: +48 % (manual)	Vertical: +48 % (manual)
Interface	Built-in speaker	10.0 W (monaural)	10.0 W (monaural)
	Terminals	HDMI in [HDMI 19-pin x 1 (HDCP compatible)] Computer in 1 [D-sub HD 15-pin x 1 (RGB/YPrPb/YCbCr x 1)] Computer in 2/Monitor out [D-sub HD 15-pin x 1 (RGB x 1)] Composite video in [Pin jack x 1] S-Video in [Mini-DIN 4-pin x 1] Computer audio in 1 [M3 x 1 (L-R x 1)] Computer audio in 2/MIC in [M3 x 1 (L-R x 1)] Video audio in [Pin jack x 2 (L x 1, R x 1)] Audio out [M3 x 1 (L-R x 1)] Serial in [D-sub 9-pin x 1 (RS-232C)] LAN/DIGITAL LINK [RJ-45 x 1, for network/DIGITAL LINK connection, 100Base-TX, HDCP compatible]	HDMI in [HDMI 19-pin x 1 (HDCP compatible)] Computer in 1 [D-sub HD 15-pin x 1 (RGB/YPrPb/YCbCr x 1)] Computer in 2/Monitor out [D-sub HD 15-pin x 1 (RGB x 1)] Composite video in [Pin jack x 1] S-Video in [Mini-DIN 4-pin x 1] Computer audio in 1 [M3 x 1 (L-R x 1)] Computer audio in 2/MIC in [M3 x 1 (L-R x 1)] Video audio in [Pin jack x 2 (L x 1, R x 1)] Audio out [M3 x 1 (L-R x 1)] Serial in [D-sub 9-pin x 1 (RS-232C)] LAN [RJ-45 x 1 (10Base-T/100Base-TX)]
	Power supply	100-240 V AC, 50/60 Hz	100-240 V AC, 50/60 Hz
	Power consumption	365 W	365 W
	Dimensions (W x H x D)	379 x 107*4 x 305 mm*5 [14-29/32 x 4-7/32*4 x 12 inches]*5	379 x 107*4 x 305 mm*5 [14-29/32 x 4-7/32*4 x 12 inches]*5
	Weight*3	Approx. 4.8 kg/10.6 lbs	Approx. 4.8 kg/10.6 lbs
	Filter	Pleated Micro Cut Filter	Pleated Micro Cut Filter
	Daylight View	Daylight View Basic	Daylight View Basic
	Wireless Ready	-	-
	USB Memory Viewer	-	-
USB Display	-	-	
Audio Out During Standby	Yes	-	
Accessory	Replacement lamp	ET-LAV200	ET-LAV200
	Optional accessories	ET-PKV100H (High ceiling mount bracket) ET-PKV100S (Low ceiling mount bracket) ET-PKV200B (Bracket assembly) ET-RFV200 (Replacement filter unit) ET-YFB100G (Digital Interface Box)	ET-PKV100H (High ceiling mount bracket) ET-PKV100S (Low ceiling mount bracket) ET-PKV200B (Bracket assembly) ET-RFV200 (Replacement filter unit)
	Standard accessories	Power cord with power cord holder, wireless remote control unit, batteries for remote control unit, carrying bag, computer cable, software CD-ROM (Logo Transfer Software, Multi Projector Monitoring and Control Software)	Power cord with power cord holder, wireless remote control unit, batteries for remote control unit, carrying bag, computer cable, software CD-ROM (Logo Transfer Software, Multi Projector Monitoring and Control Software)

*1: Input signals that exceed the native resolution will be converted to the native resolution.

*2: The screen size is that of the original aspect ratio.

*3: Average value. Each product has an individual variable in weight.

PT-VW435N



15.0 mm (0.59 inches) LCD x 3
16:10
280 W UHM
4,300 lm
F 1.60-2.12, f 15.28-24.62 mm (1.18-1.90:1)
3,500:1
WXGA (1,280 x 800)/WUXGA (1,920 x 1,200)
0.76-7.62 m (30-300 inches)
Vertical: +48 % [manual]
10.0 W (monaural)
HDMI in [HDMI 19-pin x 1 (HDCP compatible)]
Computer in 1 [D-sub HD 15-pin x 1 (RGB/YpPr/YCbCr x 1)]
Computer in 2/Monitor out [D-sub HD 15-pin x 1 (RGB x 1)]
Composite video in [Pin jack x 1]
S-Video in [Mini-DIN 4-pin x 1]
Computer audio in 1 [M3 x 1 (L-R x 1)]
Computer audio in 2/MIC in [M3 x 1 (L-R x 1)]
Video audio in [Pin jack x 2 (L x 1, R x 1)]
Audio out [M3 x 1 (L-R x 1)]
Serial in [D-sub 9-pin x 1 (RS-232C)]
LAN [RJ-45 x 1 (10Base-T/100Base-TX)]
USB A [USB type-A x 1]
USB B [USB type-B x 1]

100-240 V AC, 50/60 Hz
365 W
379 x 107 ⁴ x 305 mm ⁵ [14-29/32 x 4-7/32 ⁴ x 12 inches] ⁵
Approx. 4.8 kg/10.6 lbs
Pleated Micro Cut Filter
Daylight View Basic
Wireless Manager ME 6.0, iOS, Android
Yes
Yes
-

ET-LAV200
ET-PKV100H (High ceiling mount bracket)
ET-PKV100S (Low ceiling mount bracket)
ET-PKV200B (Bracket assembly)
ET-RFV200 (Replacement filter unit)

Power cord with power cord holder, wireless remote control unit, batteries for remote control unit, carrying bag, computer cable, software CD-ROM (Logo Transfer Software, Multi Projector Monitoring and Control Software, Wireless Manager ME 6.0)

PT-VX510



16.0 mm (0.63 inches) LCD x 3
4:3
280 W UHM
5,500 lm
F 1.60-2.12, f 15.28-24.62 mm (1.18-1.90:1)
4,000:1
XGA (1,024 x 768)/WUXGA (1,920 x 1,200)
0.76-7.62 m (30-300 inches)
Vertical: +40 % [manual]
10.0 W (monaural)
HDMI in [HDMI 19-pin x 1 (HDCP compatible)]
Computer in 1 [D-sub HD 15-pin x 1 (RGB/YpPr/YCbCr x 1)]
Computer in 2/Monitor out [D-sub HD 15-pin x 1 (RGB x 1)]
Composite video in [Pin jack x 1]
S-Video in [Mini-DIN 4-pin x 1]
Computer audio in 1 [M3 x 1 (L-R x 1)]
Computer audio in 2/MIC in [M3 x 1 (L-R x 1)]
Video audio in [Pin jack x 2 (L x 1, R x 1)]
Audio out [M3 x 1 (L-R x 1)]
Serial in [D-sub 9-pin x 1 (RS-232C)]
LAN [RJ-45 x 1 (10Base-T/100Base-TX)]

100-240 V AC, 50/60 Hz
365 W
379 x 107 ⁴ x 305 mm ⁵ [14-29/32 x 4-7/32 ⁴ x 12 inches] ⁵
Approx. 4.8 kg/10.6 lbs
Pleated Micro Cut Filter
Daylight View Basic
-
-
-
-

ET-LAV200
ET-PKV100H (High ceiling mount bracket)
ET-PKV100S (Low ceiling mount bracket)
ET-PKV200B (Bracket assembly)
ET-RFV200 (Replacement filter unit)

Power cord with power cord holder, wireless remote control unit, batteries for remote control unit, carrying bag, computer cable, software CD-ROM (Logo Transfer Software, Multi Projector Monitoring and Control Software)

PT-VX505N



16.0 mm (0.63 inches) LCD x 3
4:3
280 W UHM
5,000 lm
F 1.60-2.12, f 15.28-24.62 mm (1.18-1.90:1)
4,000:1
XGA (1,024 x 768)/WUXGA (1,920 x 1,200)
0.76-7.62 m (30-300 inches)
Vertical: +40 % [manual]
10.0 W (monaural)
HDMI in [HDMI 19-pin x 1 (HDCP compatible)]
Computer in 1 [D-sub HD 15-pin x 1 (RGB/YpPr/YCbCr x 1)]
Computer in 2/Monitor out [D-sub HD 15-pin x 1 (RGB x 1)]
Composite video in [Pin jack x 1]
S-Video in [Mini-DIN 4-pin x 1]
Computer audio in 1 [M3 x 1 (L-R x 1)]
Computer audio in 2/MIC in [M3 x 1 (L-R x 1)]
Video audio in [Pin jack x 2 (L x 1, R x 1)]
Audio out [M3 x 1 (L-R x 1)]
Serial in [D-sub 9-pin x 1 (RS-232C)]
LAN [RJ-45 x 1 (10Base-T/100Base-TX)]
USB A [USB type-A x 1]
USB B [USB type-B x 1]

100-240 V AC, 50/60 Hz
365 W
379 x 107 ⁴ x 305 mm ⁵ [14-29/32 x 4-7/32 ⁴ x 12 inches] ⁵
Approx. 4.8 kg/10.6 lbs
Pleated Micro Cut Filter
Daylight View Basic
Wireless Manager ME 6.0, iOS, Android
Yes
Yes
-

ET-LAV200
ET-PKV100H (High ceiling mount bracket)
ET-PKV100S (Low ceiling mount bracket)
ET-PKV200B (Bracket assembly)
ET-RFV200 (Replacement filter unit)

Power cord with power cord holder, wireless remote control unit, batteries for remote control unit, carrying bag, computer cable, software CD-ROM (Logo Transfer Software, Multi Projector Monitoring and Control Software, Wireless Manager ME 6.0)

*4: Height: with legs at shortest position.
*5: Depth: protruding parts not included.

Portable

PT-VW345NZ



PT-VW340Z



	PT-VW345NZ	PT-VW340Z	
Optical	Panel type	15.0 mm (0.59 inches) LCD x 3	15.0 mm (0.59 inches) LCD x 3
	Aspect ratio	16:10	16:10
	Lamp	230 W UHM	230 W UHM
	Brightness	3,700 lm	3,700 lm
	Lens (throw ratio)	F 1.60-2.12, f 15.30-24.64 mm (1.2-1.9:1)	F 1.60-2.12, f 15.30-24.64 mm (1.2-1.9:1)
	Contrast (full on/full off)	3,000:1	3,000:1
	Resolution native/maximum*1	WXGA (1,280 x 800)/WUXGA (1,920 x 1,200)	WXGA (1,280 x 800)/WUXGA (1,920 x 1,200)
	Screen size (diagonal)**2	0.76-7.62 m [30-300 inches]	0.76-7.62 m [30-300 inches]
	Lens shift	49:1 (fixed)	49:1 (fixed)
Interface	Built-in speaker	10.0 W (monaural)	10.0 W (monaural)
	Terminals	HDMI in [HDMI 19-pin x 1 (HDCP compatible)]	HDMI in [HDMI 19-pin x 1 (HDCP compatible)]
		Computer in 1 [D-sub HD 15-pin x 1 (RGB/YPbPr/YCbCr x 1)]	Computer in 1 [D-sub HD 15-pin x 1 (RGB/YPbPr/YCbCr x 1)]
		Computer in 2/Monitor out [D-sub HD 15-pin x 1 (RGB x 1)]	Computer in 2/Monitor out [D-sub HD 15-pin x 1 (RGB x 1)]
		Composite video in [Pin jack x 1]	Composite video in [Pin jack x 1]
		S-Video in [Mini-DIN 4-pin x 1]	S-Video in [Mini-DIN 4-pin x 1]
		Audio in 1 [M3 x 1 (L-R x 1)]	Audio in 1 [M3 x 1 (L-R x 1)]
		Audio in 2/MIC in [M3 x 1 (L-R x 1)]	Audio in 2/MIC in [M3 x 1 (L-R x 1)]
		Audio in 3 [Pin jack x 2 (L x 1, R x 1)]	Audio in 3 [Pin jack x 2 (L x 1, R x 1)]
		Audio out [M3 x 1 (L-R x 1)]	Audio out [M3 x 1 (L-R x 1)]
		Serial in [D-sub 9-pin x 1 (RS-232C)]	Serial in [D-sub 9-pin x 1 (RS-232C)]
		LAN [RJ-45 x 1 (10Base-T/100Base-TX)]	LAN [RJ-45 x 1 (10Base-T/100Base-TX)]
		USB A [USB type-A x 1]	USB A [USB type-A x 1]
	USB B [USB type-B x 1]	USB B [USB type-B x 1]	
General	Power supply	100-240 V AC, 50/60 Hz	100-240 V AC, 50/60 Hz
	Power consumption	300 W (100-120 V AC)/280 W (220-240 V AC)	300 W (100-120 V AC)/280 W (220-240 V AC)
	Dimensions (W x H x D)	352 x 98*4 x 279.4 mm*5 [13-27/32 x 3-27/32*4 x 11 inches]*5	352 x 98*4 x 279.4 mm*5 [13-27/32 x 3-27/32*4 x 11 inches]*5
	Weight*3	Approx. 3.4 kg/7.5 lbs	Approx. 3.3 kg/7.3 lbs
Features	Filter	Pleated Micro Cut Filter	Pleated Micro Cut Filter
	Emulation	Yes	Yes
	Daylight View	Daylight View Basic	Daylight View Basic
	Easy Setting	Yes	-
	P-in-P/Side-by-Side	P-in-P/Side-by-Side	P-in-P/Side-by-Side
	Wireless Ready	Miracast™, Wireless Manager ME 6.0, iOS, Android	-
	USB Memory Viewer	Yes	-
	USB Display	Yes	-
Audio Out During Standby	Yes	Yes	
Accessory	Replacement lamp	ET-LAV300	ET-LAV300
	Optional accessories	ET-PKV100H (High ceiling mount bracket) ET-PKV100S (Low ceiling mount bracket) ET-PKV101B (Bracket assembly) ET-RFV300 (Replacement filter unit)	ET-PKV100H (High ceiling mount bracket) ET-PKV100S (Low ceiling mount bracket) ET-PKV101B (Bracket assembly) ET-RFV300 (Replacement filter unit)
	Standard accessories	Power cord with power cord holder, wireless remote control unit, batteries for remote control unit, computer cable, software CD-ROM (Logo Transfer Software, Multi Projector Monitoring and Control Software, Wireless Manager ME 6.0)	Power cord with power cord holder, wireless remote control unit, batteries for remote control unit, computer cable, software CD-ROM (Logo Transfer Software, Multi Projector Monitoring and Control Software)

*1: Input signals that exceed the native resolution will be converted to the native resolution.

*2: The screen size is that of the original aspect ratio.

*3: Average value. Each product has an individual variable in weight.

PT-VX415NZ



16.0 mm (0.63 inches) LCD x 3
4:3
230 W UHM
4,200 lm
F 1.60-2.12, f 15.30-24.64 mm [1.2-1.9:1]
4,000:1
XGA (1,024 x 768)/WUXGA (1,920 x 1,200)
0.76-7.62 m [30-300 inches]
9:1 (fixed)

10.0 W (monaural)
HDMI in [HDMI 19-pin x 1
(HDCP compatible)]
Computer in 1 [D-sub HD 15-pin x 1
(RGB/YPbPr/YCbCr x 1)]
Computer in 2/Monitor out
[D-sub HD 15-pin x 1 (RGB x 1)]
Composite video in [Pin jack x 1]
S-Video in [Mini-DIN 4-pin x 1]
Audio in 1 [M3 x 1 (L-R x 1)]
Audio in 2/MIC in [M3 x 1 (L-R x 1)]
Audio in 3 [Pin jack x 2 (L x 1, R x 1)]
Audio out [M3 x 1 (L-R x 1)]
Serial in [D-sub 9-pin x 1 (RS-232C)]
LAN [RJ-45 x 1 (10Base-T/100Base-TX)]
USB A [USB type-A x 1]
USB B [USB type-B x 1]

100-240 V AC, 50/60 Hz
300 W (100-120 V AC)/280 W (220-240 V AC)
352 x 98^{*4} x 279.4 mm^{*5}
[13-27/32 x 3-27/32^{*4} x 11 inches]^{*5}
Approx. 3.4 kg/7.5 lbs

Pleated Micro Cut Filter
Yes
Daylight View Basic
Yes
-
-
Miracast™, Wireless Manager ME 6.0, iOS, Android
Yes
Yes
Yes

ET-LAV300
ET-PKV100H (High ceiling mount bracket)
ET-PKV100S (Low ceiling mount bracket)
ET-PKV101B (Bracket assembly)
ET-RFV300 (Replacement filter unit)

Power cord with power cord holder, wireless remote control unit, batteries for remote control unit, computer cable, software CD-ROM (Logo Transfer Software, Multi Projector Monitoring and Control Software, Wireless Manager ME 6.0)

PT-VX410Z



16.0 mm (0.63 inches) LCD x 3
4:3
230 W UHM
4,200 lm
F 1.60-2.12, f 15.30-24.64 mm [1.2-1.9:1]
4,000:1
XGA (1,024 x 768)/WUXGA (1,920 x 1,200)
0.76-7.62 m [30-300 inches]
9:1 (fixed)

10.0 W (monaural)
HDMI in [HDMI 19-pin x 1
(HDCP compatible)]
Computer in 1 [D-sub HD 15-pin x 1
(RGB/YPbPr/YCbCr x 1)]
Computer in 2/Monitor out
[D-sub HD 15-pin x 1 (RGB x 1)]
Composite video in [Pin jack x 1]
S-Video in [Mini-DIN 4-pin x 1]
Audio in 1 [M3 x 1 (L-R x 1)]
Audio in 2/MIC in [M3 x 1 (L-R x 1)]
Audio in 3 [Pin jack x 2 (L x 1, R x 1)]
Audio out [M3 x 1 (L-R x 1)]
Serial in [D-sub 9-pin x 1 (RS-232C)]
LAN [RJ-45 x 1 (10Base-T/100Base-TX)]

100-240 V AC, 50/60 Hz
300 W (100-120 V AC)/280 W (220-240 V AC)
352 x 98^{*4} x 279.4 mm^{*5}
[13-27/32 x 3-27/32^{*4} x 11 inches]^{*5}
Approx. 3.3 kg/7.3 lbs

Pleated Micro Cut Filter
Yes
Daylight View Basic
-
-
-
-
-
Yes

ET-LAV300
ET-PKV100H (High ceiling mount bracket)
ET-PKV100S (Low ceiling mount bracket)
ET-PKV101B (Bracket assembly)
ET-RFV300 (Replacement filter unit)

Power cord with power cord holder, wireless remote control unit, batteries for remote control unit, computer cable, software CD-ROM (Logo Transfer Software, Multi Projector Monitoring and Control Software)

PT-VX42Z



16.0 mm (0.63 inches) LCD x 3
4:3
230 W UHM
4,000 lm
F 1.60-1.72, f 22.33-26.80 mm [1.7-2.1:1]
4,000:1
XGA (1,024 x 768)/WUXGA (1,920 x 1,200)
1.02-7.62 m [40-300 inches]
9:1 (fixed)

10.0 W (monaural)
HDMI in [HDMI 19-pin x 1
(HDCP compatible)]
Computer in 1 [D-sub HD 15-pin x 1
(RGB/YPbPr/YCbCr x 1)]
Computer in 2/Monitor out
[D-sub HD 15-pin x 1 (RGB x 1)]
Composite video in [Pin jack x 1]
S-Video in [Mini-DIN 4-pin x 1]
Audio in 1 [M3 x 1 (L-R x 1)]
Audio in 2/MIC in [M3 x 1 (L-R x 1)]
Audio in 3 [Pin jack x 2 (L x 1, R x 1)]
Audio out [M3 x 1 (L-R x 1)]
Serial in [D-sub 9-pin x 1 (RS-232C)]
LAN [RJ-45 x 1 (10Base-T/100Base-TX)]

100-240 V AC, 50/60 Hz
300 W (100-120 V AC)/280 W (220-240 V AC)
352 x 98^{*4} x 255 mm^{*5}
[13-27/32 x 3-27/32^{*4} x 10-1/32 inches]^{*5}
Approx. 3.2 kg/7.1 lbs

Pleated Micro Cut Filter
Yes
Daylight View Basic
-
-
-
-
-
Yes

ET-LAV300
ET-PKV100H (High ceiling mount bracket)
ET-PKV100S (Low ceiling mount bracket)
ET-PKV101B (Bracket assembly)
ET-RFV300 (Replacement filter unit)

Power cord with power cord holder, wireless remote control unit, batteries for remote control unit, computer cable, software CD-ROM (Logo Transfer Software, Multi Projector Monitoring and Control Software)

*4: Height: with legs at shortest position.

*5: Depth: Including protruding parts.

Portable

PT-LW330

NEW



LCD Projector
3,300 lm WXGA **WIRED LAN**

PT-LW280

NEW



LCD Projector
2,800 lm WXGA **WIRED LAN**

Optical	Panel type	15.0 mm (0.59 inches) LCD x 3	15.0 mm (0.59 inches) LCD x 3
	Aspect ratio	16:10	16:10
	Lamp	230 W UHM	230 W UHM
	Brightness	3,300 lm	2,800 lm
	Lens (throw ratio)	F 1.60-1.76, f 19.16-23.02 mm (1.48-1.78:1)	F 2.1-2.25, f 19.11-22.94 mm (1.47-1.77:1)
	Contrast (full on/full off)	10,000:1	10,000:1
	Resolution native/maximum*1	WXGA (1,280 x 800)/WUXGA (1,920 x 1,200)	WXGA (1,280 x 800)/WUXGA (1,920 x 1,200)
	Screen size (diagonal)**2	0.76-7.62 m (30-300 inches)	0.76-7.62 m (30-300 inches)
Lens shift	13:1 (fixed)	13:1 (fixed)	
Interface	Built-in speaker	10.0 W (monaural)	10.0 W (monaural)
	Terminals	HDMI in [HDMI 19-pin x 1 (HDCP compatible)] Computer in 1 [D-sub HD 15-pin x 1 (RGB/YpPr/YCbCr/S-VIDEO x 1)] Computer in 2/Monitor out [D-sub HD 15-pin x 1 (RGB x 1)] Composite video in [Pin jack x 1] Audio in 1 [M3 x 1 (L-R x 1)] Audio in 2 [Pin jack x 2 (L x 1, R x 1)] Audio out [M3 x 1 (L-R x 1)] Serial in [D-sub 9-pin x 1 (RS-232C)] LAN [RJ-45 x 1 (10Base-T/100Base-TX)] USB A [USB type-A x 1] USB B [USB type-B x 1]	HDMI in [HDMI 19-pin x 1 (HDCP compatible)] Computer in 1 [D-sub HD 15-pin x 1 (RGB/YpPr/YCbCr/S-VIDEO x 1)] Computer in 2/Monitor out [D-sub HD 15-pin x 1 (RGB x 1)] Composite video in [Pin jack x 1] Audio in 1 [M3 x 1 (L-R x 1)] Audio in 2 [Pin jack x 2 (L x 1, R x 1)] Audio out [M3 x 1 (L-R x 1)] Serial in [D-sub 9-pin x 1 (RS-232C)] LAN [RJ-45 x 1 (10Base-T/100Base-TX)] USB A [USB type-A x 1] USB B [USB type-B x 1]
General	Power supply	100-240 V AC, 50/60 Hz	100-240 V AC, 50/60 Hz
	Power consumption	300 W	300 W
	Dimensions (W x H x D)	335 x 96*4 x 252 mm (13-3/16 x 3-25/32*4 x 9-29/32 inches)	335 x 96*4 x 252 mm (13-3/16 x 3-25/32*4 x 9-29/32 inches)
	Weight*3	Approx. 2.8 kg/6.2 lbs	Approx. 2.8 kg/6.2 lbs
Features	Filter	Pleated Micro Cut Filter	Pleated Micro Cut Filter
	Emulation	-	-
	Daylight View	Daylight View Lite	Daylight View Lite
	Corner Keystone	Yes	Yes
	Curved Screen Correction	Yes	Yes
	USB Memory Viewer	Yes	Yes
	USB Display	Yes	Yes
Audio Out During Standby	-	-	
Accessory	Replacement lamp	ET-LAL500	ET-LAL500
	Optional accessories	ET-PKL100H (High ceiling mount bracket) ET-PKL100S (Low ceiling mount bracket) ET-PKL420B (Bracket assembly) ET-RFL300 (Replacement filter unit) ET-ADSV (D-Sub/S-VIDEO conversion cable)	ET-PKL100H (High ceiling mount bracket) ET-PKL100S (Low ceiling mount bracket) ET-PKL420B (Bracket assembly) ET-RFL300 (Replacement filter unit) ET-ADSV (D-Sub/S-VIDEO conversion cable)
	Standard accessories	Power cord with power cord holder, wireless remote control unit, batteries for remote control unit, computer cable, software CD-ROM (Multi Projector Monitoring and Control Software)	Power cord with power cord holder, wireless remote control unit, batteries for remote control unit, computer cable, software CD-ROM (Multi Projector Monitoring and Control Software)

*1: Input signals that exceed the native resolution will be converted to the native resolution.

*2: The screen size is that of the original aspect ratio.

PT-LB360

NEW



LCD Projector
3,700 lm XGA **WIRED LAN**

PT-LB330

NEW



LCD Projector
3,300 lm XGA **WIRED LAN**

PT-LB300

NEW



LCD Projector
3,100 lm XGA

16.0 mm (0.63 inches) LCD x 3 4:3 230 W UHM 3,700 lm F 1.60-1.76, f 19.16-23.02 mm (1.48-1.78:1) 10,000:1 XGA (1,024 x 768)/WUXGA (1,920 x 1,200) 0.76-7.62 m (30-300 inches) 6:1 (fixed) 10.0 W (monaural) HDMI in [HDMI 19-pin x 1 (HDCP compatible)] Computer in 1 [D-sub HD 15-pin x 1 (RGB/YpPr/YCbCr /S-VIDEO x 1)] Computer in 2/Monitor out [D-sub HD 15-pin x 1 (RGBx 1)] Composite video in [Pin jack x 1] Audio in 1 [M3 x 1 (L-R x 1)] Audio in 2 [Pin jack x 2 (L x 1, R x 1)] Audio out [M3 x 1 (L-R x 1)] Serial in [D-sub 9-pin x 1 (RS-232C)] LAN [RJ-45 x 1 (10Base-T/100Base-TX)] USB A [USB type-A x 1] USB B [USB type-B x 1]	16.0 mm (0.63 inches) LCD x 3 4:3 230 W UHM 3,300 lm F 1.60-1.76, f 19.16-23.02 mm (1.48-1.78:1) 10,000:1 XGA (1,024 x 768)/WUXGA (1,920 x 1,200) 0.76-7.62 m (30-300 inches) 6:1 (fixed) 10.0 W (monaural) HDMI in [HDMI 19-pin x 1 (HDCP compatible)] Computer in 1 [D-sub HD 15-pin x 1 (RGB/YpPr/YCbCr /S-VIDEO x 1)] Computer in 2/Monitor out [D-sub HD 15-pin x 1 (RGBx 1)] Composite video in [Pin jack x 1] Audio in 1 [M3 x 1 (L-R x 1)] Audio in 2 [Pin jack x 2 (L x 1, R x 1)] Audio out [M3 x 1 (L-R x 1)] Serial in [D-sub 9-pin x 1 (RS-232C)] LAN [RJ-45 x 1 (10Base-T/100Base-TX)] USB A [USB type-A x 1] USB B [USB type-B x 1]	16.0 mm (0.63 inches) LCD x 3 4:3 230 W UHM 3,100 lm F 2.1-2.25, f 19.11-22.94 mm (1.47-1.77:1) 10,000:1 XGA (1,024 x 768)/WUXGA (1,920 x 1,200) 0.76-7.62 m (30-300 inches) 6:1 (fixed) 2.0 W (monaural) HDMI in [HDMI 19-pin x 1 (HDCP compatible)] Computer in [D-sub HD 15-pin x 1 (RGB/YpPr/YCbCr /S-VIDEO x 1)] Monitor out [D-sub HD 15-pin x 1 (RGB x 1)] Composite video in [Pin jack x 1] Audio in 1 [M3 x 1 (L-R x 1)] Audio in 2 [Pin jack x 2 (L x 1, R x 1)] Audio out [M3 x 1 (L-R x 1)] Serial in [D-sub 9-pin x 1 (RS-232C)]
100-240 V AC, 50/60 Hz 300 W 335 x 96*4 x 252 mm (13-3/16 x 3-25/32*4 x 9-29/32 inches) Approx. 2.8 kg/6.2 lbs	100-240 V AC, 50/60 Hz 300 W 335 x 96*4 x 252 mm (13-3/16 x 3-25/32*4 x 9-29/32 inches) Approx. 2.8 kg/6.2 lbs	100-240 V AC, 50/60 Hz 300 W 335 x 96*4 x 252 mm (13-3/16 x 3-25/32*4 x 9-29/32 inches) Approx. 2.8 kg/6.2 lbs
Pleated Micro Cut Filter - Daylight View Lite Yes Yes Yes Yes -	Pleated Micro Cut Filter - Daylight View Lite Yes Yes Yes Yes -	Pleated Micro Cut Filter - Daylight View Lite - - - - -
ET-LAL500 ET-PKL100H (High ceiling mount bracket) ET-PKL100S (Low ceiling mount bracket) ET-PKL420B (Bracket assembly) ET-RFL300 (Replacement filter unit) ET-ADSV (D-Sub/S-VIDEO conversion cable)	ET-LAL500 ET-PKL100H (High ceiling mount bracket) ET-PKL100S (Low ceiling mount bracket) ET-PKL420B (Bracket assembly) ET-RFL300 (Replacement filter unit) ET-ADSV (D-Sub/S-VIDEO conversion cable)	ET-LAL500 ET-PKL100H (High ceiling mount bracket) ET-PKL100S (Low ceiling mount bracket) ET-PKL420B (Bracket assembly) ET-RFL300 (Replacement filter unit) ET-ADSV (D-Sub/S-VIDEO conversion cable)
Power cord with power cord holder, wireless remote control unit, batteries for remote control unit, computer cable, software CD-ROM (Multi Projector Monitoring and Control Software)	Power cord with power cord holder, wireless remote control unit, batteries for remote control unit, computer cable, software CD-ROM (Multi Projector Monitoring and Control Software)	Power cord with power cord holder, wireless remote control unit, batteries for remote control unit, computer cable

*3: Average value. Each product has an individual variable in weight.

*4: Height: with legs at shortest position.

Large-Venue

Installation

Portable

Short Throw

Home Cinema

Portable

PT-LB280

NEW



LCD Projector
2,800 lm XGA

PT-LW25H



LCD Projector
2,500 lm WXGA **WIRED LAN**

Optical	Panel type	16.0 mm [0.63 inches] LCD x 3	15.0 mm [0.59 inches] LCD x 3
	Aspect ratio	4:3	16:10
	Lamp	230 W UHM	230 W UHM
	Brightness	2,800 lm	2,500 lm* ⁵
	Lens (throw ratio)	F 2.1-2.25, f 19.11-22.94 mm [1.47-1.77:1]	F 2.10-2.25, f 19.11-22.94 mm [1.5-1.8:1]
	Contrast (full on/full off)	10,000:1	3,000:1* ⁶
	Resolution native/maximum*¹	XGA [1,024 x 768]/WUXGA [1,920 x 1,200]	WXGA [1,280 x 800]/WUXGA [1,920 x 1,200]
	Screen size (diagonal)*²	0.76-7.62 m [30-300 inches]	0.76-7.62 m [30-300 inches]
Interface	Built-in speaker	2.0 W (monaural)	1.0 W (monaural)
	Terminals	HDMI in [HDMI 19-pin x 1 (HDCP compatible)] Computer in [D-sub HD 15-pin x 1 (RGB/YPbPr/YCaCr /S-VIDEO x 1)] Monitor out [D-sub HD 15-pin x 1 (RGB x 1)] Composite video in [Pin jack x 1] Audio in 1 [M3 x 1 (L-R x 1)] Audio in 2 [Pin jack x 2 (L x 1, R x 1)] Audio out [M3 x 1 (L-R x 1)] Serial in [D-sub 9-pin x 1 (RS-232C)]	Computer in 1 [D-sub HD 15-pin x 1 (RGB/YPbPr/YCaCr/S-VIDEO x 1)] Computer in 2/Monitor out [D-sub HD 15-pin x 1 (RGB x 1)] Composite video in [Pin jack x 1] Computer audio in 1 [M3 x 1 (L-R x 1)] Video audio in [Pin jack x 2 (L x 1, R x 1)] Serial in [D-sub 9-pin x 1 (RS-232C)] LAN [RJ-45 x 1 (10Base-T/100Base-TX)]
	Power supply	100-240 V AC, 50/60 Hz	100-240 V AC, 50/60 Hz
	Power consumption	300 W	297 W
	Dimensions (W x H x D)	335 x 96* ⁴ x 252 mm [13-3/16 x 3-25/32* ⁴ x 9-29/32 inches]	349 x 105* ⁴ x 247 mm* ⁷ [13-3/4 x 4-5/32* ⁴ x 9-3/4 inches]* ⁷
	Weight*³	Approx. 2.8 kg/6.2 lbs	Approx. 2.99 kg/6.59 lbs
	Filter	Pleated Micro Cut Filter	Three-Layered Air Filter
	Emulation	-	-
Features	Daylight View	Daylight View Lite	-
	Corner Keystone	-	-
	Wall Color Setting	Yes	Yes
	Audio Out During Standby	-	-
Accessory	Replacement lamp	ET-LAL500	ET-LAL100
	Optional accessories	ET-PKL100H (High ceiling mount bracket) ET-PKL100S (Low ceiling mount bracket) ET-PKL420B (Bracket assembly) ET-RFL300 (Replacement filter unit) ET-ADSV (D-Sub/S-VIDEO conversion cable)	ET-PKV100H (High ceiling mount bracket) ET-PKV100S (Low ceiling mount bracket) ET-PKL100B (Bracket assembly) ET-RFL100 (Replacement filter unit) ET-ADSV (D-Sub/S-VIDEO conversion cable)
	Standard accessories	Power cord with power cord holder, wireless remote control unit, batteries for remote control unit, computer cable	Power cord with power cord holder, wireless remote control unit, batteries for remote control unit, computer cable, filter cover, software CD-ROM (Logo Transfer Software, Multi Projector Monitoring and Control Software)

*1: Input signals that exceed the native resolution will be converted to the native resolution.

*2: The screen size is that of the original aspect ratio.

*3: Average value. Each product has an individual variable in weight.

PT-LX30H



16.0 mm (0.63 inches) LCD x 3
4:3
230 W UHM
3,000 lm*5
F 2.10-2.25, f 19.11-22.94 mm (1.5-1.8:1)
2,500:1*6
XGA (1,024 x 768)/WUXGA (1,920 x 1,200)
0.76-7.62 m (30-300 inches)
6:1 (fixed)
1.0 W (monaural)
Computer in 1 [D-sub HD 15-pin x 1 (RGB/YPbPr/YCbCr/S-VIDEO x 1)]
Computer in 2/Monitor out [D-sub HD 15-pin x 1 (RGB x 1)]
Composite video in [Pin jack x 1]
Computer audio in 1 [M3 x 1 (L-R x 1)]
Video audio in [Pin jack x 2 (L x 1, R x 1)]
Serial in [D-sub 9-pin x 1 (RS-232C)]
LAN [RJ-45 x 1 (10Base-T/100Base-TX)]

100-240 V AC, 50/60 Hz
297 W
349 x 105*4 x 247 mm*7 (13-3/4 x 4-5/32*4 x 9-3/4 inches)*7
Approx. 2.99 kg/6.59 lbs

Three-Layered Air Filter
-
-
-
Yes
-

ET-LAL100
ET-PKV100H (High ceiling mount bracket)
ET-PKV100S (Low ceiling mount bracket)
ET-PKL100B (Bracket assembly)
ET-RFL100 (Replacement filter unit)
ET-ADSV (D-Sub/S-VIDEO conversion cable)

Power cord with power cord holder, wireless remote control unit, batteries for remote control unit, computer cable, filter cover, software CD-ROM (Logo Transfer Software, Multi Projector Monitoring and Control Software)

PT-LX26H



14.0 mm (0.55 inches) LCD x 3
4:3
230 W UHM
2,600 lm*5
F 2.10-2.25, f 19.11-22.94 mm (1.7-2.0:1)
2,500:1*6
XGA (1,024 x 768)/WUXGA (1,920 x 1,200)
0.76-7.62 m (30-300 inches)
6:1 (fixed)
1.0 W (monaural)
Computer in 1 [D-sub HD 15-pin x 1 (RGB/YPbPr/YCbCr/S-VIDEO x 1)]
Computer in 2/Monitor out [D-sub HD 15-pin x 1 (RGB x 1)]
Composite video in [Pin jack x 1]
Computer audio in 1 [M3 x 1 (L-R x 1)]
Video audio in [Pin jack x 2 (L x 1, R x 1)]
Serial in [D-sub 9-pin x 1 (RS-232C)]
LAN [RJ-45 x 1 (10Base-T/100Base-TX)]

100-240 V AC, 50/60 Hz
297 W
349 x 105*4 x 247 mm*7 (13-3/4 x 4-5/32*4 x 9-3/4 inches)*7
Approx. 2.99 kg/6.59 lbs

Three-Layered Air Filter
-
-
-
Yes
-

ET-LAL100
ET-PKV100H (High ceiling mount bracket)
ET-PKV100S (Low ceiling mount bracket)
ET-PKL100B (Bracket assembly)
ET-RFL100 (Replacement filter unit)
ET-ADSV (D-Sub/S-VIDEO conversion cable)

Power cord, power cord holder, wireless remote control unit, batteries for remote control unit, computer cable, filter cover, software CD-ROM (Logo Transfer Software, Multi Projector Monitoring and Control Software)

Key Features

Daylight View Function

Daylight View technology enhances image visibility even under bright lighting. A built-in sensor measures the ambient light, and adjusts the halftone color and brightness level according to the surrounding illumination. Because it produces easy-to-see images without having to increase the lamps' output power, it helps to reduce power consumption. With System Daylight View, the setting can be changed manually to optimize image color perception depending on the usage environment.

OFF Daylight View



The image looks washed out in a brightly lit room.

ON Daylight View



Perceived brightness and sharpness are enhanced for easy visibility.

Note: For models supporting the above functions, please refer to the "Features" section of each specification sheet.

*4: Height: with legs at shortest position.
*5: With lamp power high. *6: With lamp power high and iris on.
*7: Depth: protruding parts not included.

Short Throw

PT-CW331R



1-Chip DLP™ Projector
3,100 lm WXGA WIRED LAN Interactive

PT-CW241R



1-Chip DLP™ Projector
2,600 lm WXGA WIRED LAN Interactive

Optical	Panel type	16.5 mm (0.65 inches) DLP™ chip x 1	16.5 mm (0.65 inches) DLP™ chip x 1
	Aspect ratio	16:10	16:10
	Lamp	280 W UHM	240 W UHM
	Brightness	3,100 lm	2,600 lm
	Lens (throw ratio)	F 2.6, f -5.27 mm (0.35:1)	F 2.6, f -5.27 mm (0.35:1)
	Contrast (full on/full off)	8,000:1	8,000:1
	Resolution native/maximum*1	WXGA (1,280 x 800)/WSXGA+ (1,680 x 1,050)	WXGA (1,280 x 800)/WSXGA+ (1,680 x 1,050)
Screen size (diagonal)*2	1.78-2.54 m [70-100 inches]	1.78-2.54 m [70-100 inches]	
Interface	Built-in speaker	10.0 W (monaural)	10.0 W (monaural)
	Terminals	HDMI in [HDMI 19-pin x 1 (HDCP compatible)] Computer in 1 [D-sub HD 15-pin x 1 (RGB/YpPr/YcCr x 1)] Computer in 2 [D-sub HD 15-pin x 1 (RGB/YpPr/YcCr x 1)] Monitor out [D-sub HD 15-pin x 1 (RGB x 1)] Composite video in [Pin jack x 1] S-Video in [Mini-DIN 4-pin x 1] Computer audio in [M3 x 2 (L-R x 2)] Video audio in [Pin jack x 2 (L x 1, R x 1)] S-Video audio in [Pin jack x 2 (L x 1, R x 1)] Audio out [M3 x 1 (L-R x 1)] Serial in [D-sub 9-pin x 1 (RS-232C)] LAN [RJ-45 x 1 (10Base-T/100Base-TX)] Mini USB [Mini USB x 1, for interactive function]	HDMI in [HDMI 19-pin x 1 (HDCP compatible)] Computer in 1 [D-sub HD 15-pin x 1 (RGB/YpPr/YcCr x 1)] Computer in 2 [D-sub HD 15-pin x 1 (RGB/YpPr/YcCr x 1)] Monitor out [D-sub HD 15-pin x 1 (RGB x 1)] Composite video in [Pin jack x 1] S-Video in [Mini-DIN 4-pin x 1] Computer audio in [M3 x 2 (L-R x 2)] Video audio in [Pin jack x 2 (L x 1, R x 1)] S-Video audio in [Pin jack x 2 (L x 1, R x 1)] Audio out [M3 x 1 (L-R x 1)] Serial in [D-sub 9-pin x 1 (RS-232C)] LAN [RJ-45 x 1 (10Base-T/100Base-TX)] Mini USB [Mini USB x 1, for interactive function]
General	Power supply	100-240 V AC, 50/60 Hz	100-240 V AC, 50/60 Hz
	Power consumption	340 W	310 W
	Dimensions (W x H x D)	357 x 250*6 x 367 mm [14-1/16 x 9-27/32*6 x 14-29/64 inches]	357 x 250*6 x 367 mm [14-1/16 x 9-27/32*6 x 14-29/64 inches]
	Weight*3	Approx. 7.8 kg/17.2 lbs	Approx. 7.6 kg/16.7 lbs
Features	Intelligent Lamp Control	-	-
	3D Ready	Yes	Yes
	Interactive Function	Yes	Yes
	Audio Out During Standby	Yes	Yes
Accessory	Replacement lamp	ET-LAC300	ET-LAC200
	Optional accessories	ET-PKV100H (High ceiling mount bracket) ET-PKV100S (Low ceiling mount bracket) ET-PKC200B (Bracket assembly) ET-PKC200W (Wall mount bracket) ET-PEN100 (Interactive pen) ET-PNT100 (Interactive pointer)	ET-PKV100H (High ceiling mount bracket) ET-PKV100S (Low ceiling mount bracket) ET-PKC200B (Bracket assembly) ET-PKC200W (Wall mount bracket) ET-PEN100 (Interactive pen) ET-PNT100 (Interactive pointer)
	Standard accessories	Power cord, power cord cover, wireless remote control unit, battery for remote control unit, computer cable, USB cable, interactive pen (x 2), batteries for interactive pen, software CD-ROM (LightPen3)	Power cord, power cord cover, wireless remote control unit, battery for remote control unit, computer cable, USB cable, interactive pen (x 2), batteries for interactive pen, software CD-ROM (LightPen3)

*1: Input signals that exceed the native resolution will be converted to the native resolution.

*2: The screen size is that of the original aspect ratio.

PT-CX301R



1-Chip DLP™ Projector



3,100 lm

XGA

PT-CW330



1-Chip DLP™ Projector



3,100 lm

WXGA

PT-CW240



1-Chip DLP™ Projector



2,600 lm

WXGA

14 mm (0.55 inches) DLP™ chip x 1
4:3
280 W UHM
3,100 lm
F 2.6, f -5.27 mm (0.44:1)
8,000:1
XGA (1,024 x 768)/WSXGA+ (1,680 x 1,050)
1.52-2.29 m (60-90 inches)
10.0 W (monaural)
HDMI in [HDMI 19-pin x 1 (HDCP compatible)]
Computer in 1 [D-sub HD 15-pin x 1 (RGB/YPbPr/YCbCr x 1)]
Computer in 2 [D-sub HD 15-pin x 1 (RGB/YPbPr/YCbCr x 1)]
Monitor out [D-sub HD 15-pin x 1 (RGB x 1)]
Composite video in [Pin jack x 1]
S-Video in [Mini-DIN 4-pin x 1]
Computer audio in [M3 x 2 (L-R x 2)]
Video audio in [Pin jack x 2 (L x 1, R x 1)]
S-Video audio in [Pin jack x 2 (L x 1, R x 1)]
Audio out [M3 x 1 (L-R x 1)]
Serial in [D-sub 9-pin x 1 (RS-232C)]
LAN [RJ-45 x 1 (10Base-T/100Base-TX)]
Mini USB [Mini USB x 1, for interactive function]

100-240 V AC, 50/60 Hz
340 W
357 x 250^{*4} x 367 mm
(14-1/16 x 9-27/32^{*4} x 14-29/64 inches)
Approx. 7.8 kg/17.2 lbs

-
Yes
Yes
Yes

ET-LAC300
ET-PKV100H (High ceiling mount bracket)
ET-PKV100S (Low ceiling mount bracket)
ET-PKC200B (Bracket assembly)
ET-PKC200W (Wall mount bracket)
ET-PEN100 (Interactive pen)
ET-PNT100 (Interactive pointer)
Power cord, power cord cover, wireless remote control unit, battery for remote control unit, computer cable, USB cable, interactive pen (x 2), batteries for interactive pen, software CD-ROM (LightPen3)

16.5 mm (0.65 inches) DLP™ chip x 1
16:10
280 W UHM
3,100 lm
F 2.6, f -5.27 mm (0.35:1)
8,000:1
WXGA (1,280 x 800)/WSXGA+ (1,680 x 1,050)
1.78-2.54 m (70-100 inches)
10.0 W (monaural)
HDMI in [HDMI 19-pin x 1 (HDCP compatible)]
Computer in 1 [D-sub HD 15-pin x 1 (RGB/YPbPr/YCbCr x 1)]
Computer in 2 [D-sub HD 15-pin x 1 (RGB/YPbPr/YCbCr x 1)]
Monitor out [D-sub HD 15-pin x 1 (RGB x 1)]
Composite video in [Pin jack x 1]
S-Video in [Mini-DIN 4-pin x 1]
Computer audio in [M3 x 2 (L-R x 2)]
Video audio in [Pin jack x 2 (L x 1, R x 1)]
S-Video audio in [Pin jack x 2 (L x 1, R x 1)]
Audio out [M3 x 1 (L-R x 1)]
Serial in [D-sub 9-pin x 1 (RS-232C)]
LAN [RJ-45 x 1 (10Base-T/100Base-TX)]
Mini USB [Mini USB x 1, for service]

100-240 V AC, 50/60 Hz
340 W
357 x 250^{*4} x 367 mm
(14-1/16 x 9-27/32^{*4} x 14-29/64 inches)
Approx. 7.7 kg/17.0 lbs

-
Yes
-

ET-LAC300
ET-PKV100H (High ceiling mount bracket)
ET-PKV100S (Low ceiling mount bracket)
ET-PKC200B (Bracket assembly)
ET-PKC200W (Wall mount bracket)
Power cord, power cord cover, wireless remote control unit, battery for remote control unit, computer cable

16.5 mm (0.65 inches) DLP™ chip x 1
16:10
240 W UHM
2,600 lm
F 2.6, f -5.27 mm (0.35:1)
8,000:1
WXGA (1,280 x 800)/WSXGA+ (1,680 x 1,050)
1.78-2.54 m (70-100 inches)
10.0 W (monaural)
HDMI in [HDMI 19-pin x 1 (HDCP compatible)]
Computer in 1 [D-sub HD 15-pin x 1 (RGB/YPbPr/YCbCr x 1)]
Computer in 2 [D-sub HD 15-pin x 1 (RGB/YPbPr/YCbCr x 1)]
Monitor out [D-sub HD 15-pin x 1 (RGB x 1)]
Composite video in [Pin jack x 1]
S-Video in [Mini-DIN 4-pin x 1]
Computer audio in [M3 x 2 (L-R x 2)]
Video audio in [Pin jack x 2 (L x 1, R x 1)]
S-Video audio in [Pin jack x 2 (L x 1, R x 1)]
Audio out [M3 x 1 (L-R x 1)]
Serial in [D-sub 9-pin x 1 (RS-232C)]
LAN [RJ-45 x 1 (10Base-T/100Base-TX)]
Mini USB [Mini USB x 1, for service]

100-240 V AC, 50/60 Hz
310 W
317 x 250^{*4} x 367 mm
(14-1/16 x 9-27/32^{*4} x 14-29/64 inches)
Approx. 7.5 kg/16.5 lbs

-
Yes
-

ET-LAC200
ET-PKV100H (High ceiling mount bracket)
ET-PKV100S (Low ceiling mount bracket)
ET-PKC200B (Bracket assembly)
ET-PKC200W (Wall mount bracket)
Power cord, power cord cover, wireless remote control unit, battery for remote control unit, computer cable

*3: Average value. Each product has an individual variable in weight.

*4: Height: with legs at shortest position.

Short Throw

PT-CX300



1-Chip DLP™ Projector
3,100 lm XGA WLED 3D PROFESSIONAL

PT-TW341R

NEW



LCD Projector
3,200 lm WXGA WLED Interactive

	PT-CX300	PT-TW341R	
Optical	Panel type	14 mm (0.55 inches) DLP™ chip x 1	15.0 mm (0.59 inches) LCD x 3
	Aspect ratio	4:3	16:10
	Lamp	280 W UHM	230 W UHM
	Brightness	3,100 lm	3,200 lm
	Lens (throw ratio)	F 2.6, f -5.27 mm (0.44:1)	F 1.8, f 6.08 mm (0.46:1)
	Contrast (full on/full off)	8,000:1	10,000:1
Interface	Resolution native/maximum*1	XGA (1,024 x 768)/WSXGA+ (1,680 x 1,050)	WXGA (1,280 x 800)/WUXGA (1,920 x 1,200)
	Screen size (diagonal)**2	1.52-2.29 m (60-90 inches)	1.27-2.54 m (50-100 inches)
	Lens shift	-	7.2:-1 (fixed)
	Built-in speaker	10.0 W (monaural)	10.0 W (monaural)
	Terminals	HDMI in [HDMI 19-pin x 1 (HDCP compatible)] Computer in 1 [D-sub HD 15-pin x 1 (RGB/YpPr/YCbCr x 1)] Computer in 2 [D-sub HD 15-pin x 1 (RGB/YpPr/YCbCr x 1)] Monitor out [D-sub HD 15-pin x 1 (RGB x 1)] Composite video in [Pin jack x 1] S-Video in [Mini-DIN 4-pin x 1] Computer audio in [M3 x 2 (L-R x 2)] Video audio in [Pin jack x 2 (L x 1, R x 1)] S-Video audio in [Pin jack x 2 (L x 1, R x 1)] Audio out [M3 x 1 (L-R x 1)] Serial in [D-sub 9-pin x 1 (RS-232C)] LAN [RJ-45 x 1 (10Base-T/100Base-TX)] Mini USB [Mini USB x 1, for service]	HDMI in [HDMI 19-pin x 1 (HDCP compatible)] Computer in 1 [D-sub HD 15-pin x 1 (RGB/YpPr/YCbCr/S-VIDEO x 1)] Computer in 2/Monitor out [D-sub HD 15-pin x 1 (RGB x 1)] Composite video in [Pin jack x 1] Audio in 1 [M3 x 1 (L-R x 1)] Audio in 2 [Pin jack x 2 (L x 1, R x 1)] Audio out [M3 x 1 (L-R x 1)] Serial in [D-sub 9-pin x 1 (RS-232C)] LAN [RJ-45 x 1 (10Base-T/100Base-TX)] USB A [USB type-A x 1] USB B [USB type-B x 1] Mini USB [Mini USB x 1, for interactive function]
	Power supply	100-240 V AC, 50/60 Hz	100-240 V AC, 50/60 Hz
General	Power consumption	340 W	300 W
	Dimensions (W x H x D)	357 x 250 ¹⁴ x 367 mm (14-1/16 x 9-27/32 ¹⁴ x 14-29/64 inches)	335 x 134.1 ¹⁴ x 329 mm (13-3/16 x 5-9/32 ¹⁴ x 12-15/16 inches)
Features	Weight*3	Approx. 7.7 kg/17.0 lbs	Approx. 3.8 kg/8.4 lbs
	Daylight View	-	Daylight View Lite
	Corner Keystone	-	Yes
	Curved Screen Correction	-	Yes
	3D Ready	Yes	-
	Interactive Function	-	Yes
	USB Memory Viewer	-	Yes
	USB Display	-	Yes
Audio Out During Standby	Yes	-	
Accessory	Replacement lamp	ET-LAC300	ET-LAL500
	Optional accessories	ET-PKV100H (High ceiling mount bracket) ET-PKV100S (Low ceiling mount bracket) ET-PKC200B (Bracket assembly) ET-PKC200W (Wall mount bracket)	ET-PKL100H (High ceiling mount bracket) ET-PKL100S (Low ceiling mount bracket) ET-PKL430B (Bracket assembly) ET-RFL300 (Replacement filter unit) ET-ADSV (D-Sub/S-VIDEO conversion cable) ET-PEN100 (Interactive pen) ET-PNT100 (Interactive pointer)
	Standard accessories	Power cord, power cord cover, wireless remote control unit, battery for remote control unit, computer cable	Power cord, wireless remote control unit, battery for remote control unit, computer cable, USB cable, interactive pen (x 2), batteries for interactive pen, software CD-ROM (Multi Projector Monitoring and Control Software, LightPen3)

*1: Input signals that exceed the native resolution will be converted to the native resolution.

*2: The screen size is that of the original aspect ratio.

PT-TW340

NEW



LCD Projector

WIRED
LAN

3,200 lm WXGA

PT-TW250

NEW



LCD Projector

WIRED
LAN

2,800 lm WXGA

PT-TX400

NEW



LCD Projector

WIRED
LAN

3,500 lm XGA

15.0 mm (0.59 inches) LCD x 3
16:10
230 W UHM
3,200 lm
F 1.8, f 6.08 mm (0.46:1)
10,000:1
WXGA (1,280 x 800)/WUXGA (1,920 x 1,200)
1.27-2.54 m (50-100 inches)
7.2:-1 (fixed)
10.0 W (monaural)

HDMI in [HDMI 19-pin x 1 (HDCP compatible)]
Computer in 1 [D-sub HD 15-pin x 1 (RGB/YPbPr/YCaCr/S-VIDEO x 1)]
Computer in 2/Monitor out [D-sub HD 15-pin x 1 (RGB x 1)]
Composite video in [Pin jack x 1]
Audio in 1 [M3 x 1 (L-R x 1)]
Audio in 2 [Pin jack x 2 (L x 1, R x 1)]
Audio out [M3 x 1 (L-R x 1)]
Serial in [D-sub 9-pin x 1 (RS-232C)]
LAN [RJ-45 x 1 (10Base-T/100Base-TX)]
USB A [USB type-A x 1]
USB B [USB type-B x 1]

15.0 mm (0.59 inches) LCD x 3
16:10
230 W UHM
2,800 lm
F 1.8, f 6.08 mm (0.46:1)
10,000:1
WXGA (1,280 x 800)/WUXGA (1,920 x 1,200)
1.27-2.54 m (50-100 inches)
7.2:-1 (fixed)
10.0 W (monaural)

HDMI in [HDMI 19-pin x 1 (HDCP compatible)]
Computer in 1 [D-sub HD 15-pin x 1 (RGB/YPbPr/YCaCr/S-VIDEO x 1)]
Computer in 2/Monitor out [D-sub HD 15-pin x 1 (RGB x 1)]
Composite video in [Pin jack x 1]
Audio in 1 [M3 x 1 (L-R x 1)]
Audio in 2 [Pin jack x 2 (L x 1, R x 1)]
Audio out [M3 x 1 (L-R x 1)]
Serial in [D-sub 9-pin x 1 (RS-232C)]
LAN [RJ-45 x 1 (10Base-T/100Base-TX)]
USB A [USB type-A x 1]
USB B [USB type-B x 1]

16.0 mm (0.63 inches) LCD x 3
4:3
230 W UHM
3,500 lm
F 1.8, f 6.08 mm (0.46:1)
10,000:1
XGA (1,024 x 768)/WUXGA (1,920 x 1,200)
1.27-2.54 m (50-100 inches)
21:1 (fixed)
10.0 W (monaural)

HDMI in [HDMI 19-pin x 1 (HDCP compatible)]
Computer in 1 [D-sub HD 15-pin x 1 (RGB/YPbPr/YCaCr/S-VIDEO x 1)]
Computer in 2/Monitor out [D-sub HD 15-pin x 1 (RGB x 1)]
Composite video in [Pin jack x 1]
Audio in 1 [M3 x 1 (L-R x 1)]
Audio in 2 [Pin jack x 2 (L x 1, R x 1)]
Audio out [M3 x 1 (L-R x 1)]
Serial in [D-sub 9-pin x 1 (RS-232C)]
LAN [RJ-45 x 1 (10Base-T/100Base-TX)]
USB A [USB type-A x 1]
USB B [USB type-B x 1]

100-240 V AC, 50/60 Hz
300 W
335 x 134.1⁴ x 329 mm
(13-3/16 x 5-9/32⁴ x 12-15/16 inches)
Approx. 3.8 kg/8.4 lbs
Daylight View Lite
Yes
Yes
-
-
Yes
Yes
-

100-240 V AC, 50/60 Hz
300 W
335 x 134.1⁴ x 329 mm
(13-3/16 x 5-9/32⁴ x 12-15/16 inches)
Approx. 3.8 kg/8.4 lbs
Daylight View Lite
Yes
Yes
-
-
Yes
Yes
-

100-240 V AC, 50/60 Hz
300 W
335 x 134.1⁴ x 329 mm
(13-3/16 x 5-9/32⁴ x 12-15/16 inches)
Approx. 3.8 kg/8.4 lbs
Daylight View Lite
Yes
Yes
-
-
Yes
Yes
-

ET-LAL500
ET-PKL100H (High ceiling mount bracket)
ET-PKL100S (Low ceiling mount bracket)
ET-PKL430B (Bracket assembly)
ET-RFL300 (Replacement filter unit)
ET-ADSV (D-Sub/S-VIDEO conversion cable)

ET-LAL500
ET-PKL100H (High ceiling mount bracket)
ET-PKL100S (Low ceiling mount bracket)
ET-PKL430B (Bracket assembly)
ET-RFL300 (Replacement filter unit)
ET-ADSV (D-Sub/S-VIDEO conversion cable)

ET-LAL500
ET-PKL100H (High ceiling mount bracket)
ET-PKL100S (Low ceiling mount bracket)
ET-PKL430B (Bracket assembly)
ET-RFL300 (Replacement filter unit)
ET-ADSV (D-Sub/S-VIDEO conversion cable)

Power cord, wireless remote control unit, battery for remote control unit, computer cable, software CD-ROM (Multi Projector Monitoring and Control Software)

Power cord, wireless remote control unit, battery for remote control unit, computer cable, software CD-ROM (Multi Projector Monitoring and Control Software)

Power cord, wireless remote control unit, battery for remote control unit, computer cable, software CD-ROM (Multi Projector Monitoring and Control Software)

*3: Average value. Each product has an individual variable in weight.

*4: Height: with legs at shortest position.

Short Throw

PT-TX310

NEW



LCD Projector
3,200 lm XGA **WIRED LAN**

PT-TX210

NEW



LCD Projector
2,800 lm XGA

Optical	Panel type	16.0 mm (0.63 inches) LCD x 3	16.0 mm (0.63 inches) LCD x 3	
	Aspect ratio	4:3	4:3	
	Lamp	230 W UHM	230 W UHM	
	Brightness	3,200 lm	2,800 lm	
	Lens (throw ratio)	F 1.8, f 6.08 mm (0.46:1)	F 1.8, f 6.08 mm (0.46:1)	
	Contrast (full on/full off)	10,000:1	10,000:1	
	Resolution native/maximum*1	XGA (1,024 x 768)/WUXGA (1,920 x 1,200)	XGA (1,024 x 768)/WUXGA (1,920 x 1,200)	
	Screen size (diagonal)*2	1.27-2.54 m (50-100 inches)	1.27-2.54 m (50-100 inches)	
Interface	Lens shift	21:1 (fixed)	21:1 (fixed)	
	Built-in speaker	10.0 W (monaural)	2.0 W (monaural)	
General	Terminals	HDMI in [HDMI 19-pin x 1 (HDCP compatible)] Computer in 1 [D-sub HD 15-pin x 1 (RGB/YpPr/YCbCr/S-VIDEO x 1)] Computer in 2/Monitor out [D-sub HD 15-pin x 1 (RGB x 1)] Composite video in [Pin jack x 1] Audio in 1 [M3 x 1 (L-R x 1)] Audio in 2 [Pin jack x 2 (L x 1, R x 1)] Audio out [M3 x 1 (L-R x 1)] Serial in [D-sub 9-pin x 1 (RS-232C)] LAN [RJ-45 x 1 (10Base-T/100Base-TX)] USB A [USB type-A x 1] USB B [USB type-B x 1]	HDMI in [HDMI 19-pin x 1 (HDCP compatible)] Computer in 1 [D-sub HD 15-pin x 1 (RGB x 1)] Monitor out [D-sub HD 15-pin x 1 (RGB x 1)] Composite video in [Pin jack x 1] Audio in 1 [M3 x 1 (L-R x 1)] Audio in 2 [Pin jack x 2 (L x 1, R x 1)] Audio out [M3 x 1 (L-R x 1)] Serial in [D-sub 9-pin x 1 (RS-232C)]	
	Power supply	100-240 V AC, 50/60 Hz	100-240 V AC, 50/60 Hz	
	Power consumption	300 W	300 W	
	Dimensions (W x H x D)	335 x 134.1*4 x 329 mm (13-3/16 x 5-9/32*4 x 12-15/16 inches)	335 x 134.1*4 x 329 mm (13-3/16 x 5-9/32*4 x 12-15/16 inches)	
	Weight*3	Approx. 3.8 kg/8.4 lbs	Approx. 3.8 kg/8.4 lbs	
	Features	Daylight View	Daylight View Lite	Daylight View Lite
		Corner Keystone	Yes	-
		Curved Screen Correction	Yes	-
		3D Ready	-	-
		Interactive Function	-	-
		USB Memory Viewer	Yes	-
		USB Display	Yes	-
	Audio Out During Standby	-	-	
Accessory	Replacement lamp	ET-LAL500	ET-LAL500	
	Optional accessories	ET-PKL100H (High ceiling mount bracket) ET-PKL100S (Low ceiling mount bracket) ET-PKL430B (Bracket assembly) ET-RFL300 (Replacement filter unit) ET-ADSV (D-Sub/S-VIDEO conversion cable)	ET-PKL100H (High ceiling mount bracket) ET-PKL100S (Low ceiling mount bracket) ET-PKL430B (Bracket assembly) ET-RFL300 (Replacement filter unit) ET-ADSV (D-Sub/S-VIDEO conversion cable)	
	Standard accessories	Power cord, wireless remote control unit, battery for remote control unit, computer cable, software CD-ROM (Multi Projector Monitoring and Control Software)	Power cord, wireless remote control unit, battery for remote control unit, computer cable	

*1: Input signals that exceed the native resolution will be converted to the native resolution.

*2: The screen size is that of the original aspect ratio. *3: Average value. Each product has an individual variable in weight.

Home Cinema

PT-AE8000
PT-AT6000



LCD Projector
2,400 lm FULL HD

PT-AR100
PT-AH1000



LCD Projector
2,800 lm FULL HD

Optical	Panel type	18.7 mm (0.74 inches) LCD x 3	18.7 mm (0.74 inches) LCD x 3
	Aspect ratio	16:9	16:9
	Lamp	220 W UHM	280 W UHM
	Brightness	2,400 lm*5	2,800 lm*5
	Lens (throw ratio)	F 1.9-3.2, f 22.4-44.8 mm (1.35-2.70:1)	F 2.0-3.4, f 21.5-43.0 mm (1.33-2.69:1)
	Contrast (full on/full off)	500,000:1*6	50,000:1*6
	Resolution native/maximum*1	Full HD (1,920 x 1,080)/WUXGA (1,920 x 1,200)	Full HD (1,920 x 1,080)/WUXGA (1,920 x 1,200)
	Screen size (diagonal)*2	2D projection: 1.02-7.62 m (40-300 inches) 3D projection: 1.02-5.08 m (40-200 inches)	1.02-7.62 m (40-300 inches)
	Lens shift	Vertical: ±100 %, horizontal: ±26 %*7	Vertical: ±65 %, horizontal: ±26 %*7
Interface	Built-in speaker	-	-
	Terminals	HDMI in [HDMI 19-pin x 3 (HDCP/HDAVI Control Version 5 compliant)] Computer in [D-sub HD 15-pin x 1 (RGB/YpPr/YCaCr x 1)] Component in [Pin jack x 3 (YPbPr/YCaCr x 3)] Trigger in/Trigger out/3D shutter out [M3 x 2] Composite video in [Pin jack x 1] S-Video in [Mini-DIN 4-pin x 1] Serial [D-sub 9-pin x 1 (RS-232C)]	HDMI in [HDMI 19-pin x 2 (HDCP/HDAVI Control Version 5 compliant)] Computer in [D-sub HD 15-pin x 1 (RGB/YpPr/YCaCr x 1)] Component in [Pin jack x 3 (YPbPr/YCaCr x 3)] Trigger in/Trigger out [M3 x 2] Composite video in [Pin jack x 1] S-Video in [Mini-DIN 4-pin x 1] Serial [D-sub 9-pin x 1 (RS-232C)]
General	Power supply	100-240 V AC, 50/60 Hz	100-240 V AC, 50/60 Hz
	Power consumption	310 W	350 W
	Dimensions (W x H x D)	470 x 151*4 x 364 mm (18-17/32 x 5-15/16*4 x 14-11/32 inches)	470 x 151*4 x 380 mm (18-17/32 x 5-15/16*4 x 14-31/32 inches)
	Weight*3	Approx. 8.7 kg/19.2 lbs	Approx. 8.6 kg/19.0 lbs
Features	3D Ready	Yes	-
	Frame Creation	Yes	-
	Detail Clarity Processor	Detail Clarity Processor 4	Detail Clarity Processor 3
	Intelligent Lens Memory	Yes	-
	Light Harmonizer	-	Light Harmonizer 3
Accessory	Replacement lamp	ET-LAA410	ET-LAA110
	Optional accessories	ET-PKA110H (High ceiling mount bracket) ET-PKA110S (Low ceiling mount bracket) ET-TRM110 (3D IR transmitter) TY-EW3D3M (3D eyewear)	ET-PKA110H (High ceiling mount bracket) ET-PKA110S (Low ceiling mount bracket)
	Standard accessories	Power cord, wireless remote control unit, batteries for remote control unit	Power cord, wireless remote control unit, batteries for remote control unit

*4: Height: with legs at shortest position. *5: In Dynamic mode, with dynamic iris on.

*6: In Cinema 1 mode, with dynamic iris on. *7: Shift range is limited during simultaneous horizontal and vertical shifting.



Geometric Adjustment Feature and Upgrade Kits Enhance the Potential of Audio Visual Solutions

Flexible projection with a peripheral system turns image viewing into a memorable experience. Panasonic offers features that provide truly unique applications.

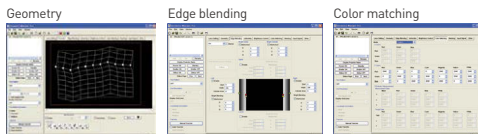
Geometric Adjustment

Projectors with a built-in Geometric Adjustment function expand projection capability onto spherical, cylindrical and other specially shaped screens. New Geometric Adjustment for the PT-DZ21K/DS20K/DZ16K/DZ13K/DS12K/DZ870 has 4-Corner Adjustment and Keep Aspect Off functions for simple and fine adjustment.



Geometry Manager Pro Software and Upgrade Kit maximize the projector's performance

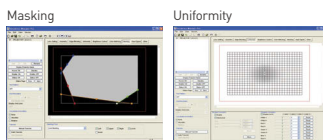
Using Geometry Manager Pro Software allows you to perform real-time geometric compensation and other fine adjustments and corrections that cannot be handled on the projector side.



More Flexible & Functional Activation

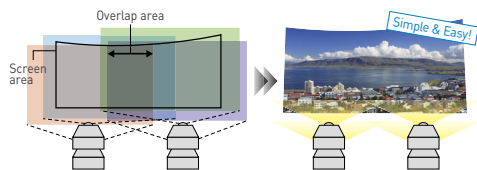
■ Upgrade Kit for Geometry Manager Pro (ET-UK20)

The optional upgrade kit (ET-UK20) can be used to expand the correctable range for Geometry Manager Pro Software. It also supports Custom Masking, Uniformity Correction, and other useful functions for multi-projector setups (max. 64 units). Its flexible and complex projection capability suits a wide variety of screen shapes.



■ Auto Screen Adjustment Upgrade Kit (ET-CUK10)*

The ET-CUK10 Auto Screen Adjustment Upgrade Kit activates the Auto Screen Adjustment plug-in software. This plug-in software expands the functions of Geometry Manager Pro, and allows automatic adjustment of geometry correction, edge blending, color, and brightness according to the shape of the screen through use of an externally connected camera.



Allows automatic adjustment for multi-screen projection or curved-screen projection.

Compatible Projector Models

	PT-DZ21K	PT-DS20K	PT-DW17K	PT-DZ16K	PT-DZ13K	PT-DS12K	PT-DW11K	PT-DZ10K	PT-DZ870	PT-DW830	PT-DX100
Geometric Adjustment	Yes	Yes	No	Yes	Yes	Yes	No	Yes	Yes	No	No
Geometry Manager Pro Software	Yes	Yes	No	No	Yes	Yes	No	Yes	Yes	No	No
ET-UK20	Yes	Yes	No	No	Yes	Yes	No	No	Yes	No	No
ET-CUK10*	Yes	Yes	No	No	Yes	Yes	No	Yes	Yes	No	No

* A firmware update is required to use these functions. Available for use worldwide except in the United States. Availability varies depending on the country. For more information, please contact the sales company in your region.

For downloading/activating the software and optional upgrade kits, please visit the PASS system >> panasonic.net/avc/projector/pass/

Why Panasonic Wireless Projector?

Wireless projectors require no cables for PC connection. That means you don't have to worry about cable lengths, and you can flexibly lay out the system for fast, easy setup and removal. Panasonic's wireless projectors are designed for easy operation, and their multi-device and multi-connection capabilities give them advanced functions that greatly expand their usage.



Large-Venue

Wireless Manager ME 5.5/6.0 Multifunctional Application Software



The Wireless Manager ME 5.5/6.0 application provided with the projector allows easy transfer of data from the screen of a personal computer through a PC's wired or wireless LAN function. Additionally, screen images from multiple computers can be projected by using Multi-Live mode.



Four-Window Multi Style
displays up to four computer screens at a time.



Four-Window Index Style
displays thumbnails of four computer screens.



16-Window Index Style
displays thumbnails of 16 computer screens.

Installation

The Optional Easy Wireless Stick (ET-UW100) Simplifies Wireless Projection

The ET-UW100 Easy Wireless Stick integrates a wireless application and a wireless LAN adapter. Simply plug it into the computer's USB port for easy wireless projection of the computer screen without installing Wireless Manager ME5.5/6.0.



ET-UW100

Note: The availability of the ET-UW100 varies depending on the country. A firmware update is required to use the ET-UW100 with the PT-VW345NZ/VX415NZ.

For more information, please visit the website >> panasonic.net/avc/projector/

Portable

Wireless Projection from Tablet Devices or Smartphones



"Panasonic Wireless Projector for iOS" Application* or "Panasonic Wireless Projector for Android" Application* allows wireless projection from tablet devices or smartphones.

Projectable documents**



* They can both be downloaded for free. The iOS version from the AppStore, and the Android version from Google Play.
** Text, RichText, and Keynote files are not supported by Wireless Projector for Android.

Short Throw

Miracast™ Wireless Projection*



You can connect a Miracast™-compatible PC, tablet or Android phone directly to the projector without having to access a Wi-Fi® network.

This instantly mirrors whatever is on your screen, such as Full-HD video, websites, online video streams, and PowerPoint® documents.

- No need to install software or applications
- HDCP 2.1 compliant
- High quality video and audio transfer

* Wireless projection with devices that are not Miracast™-compatible or wireless projection from multiple devices requires the installation of dedicated software.

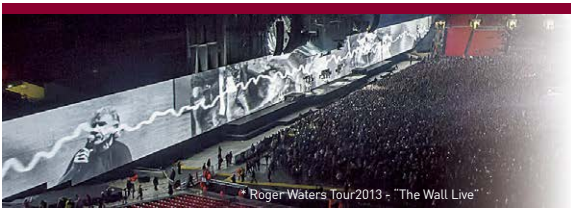
For more information, please visit the website >> panasonic.net/avc/projector/

Supports future-technology Miracast™-compatible devices.



The list of tested Miracast™-compatible devices will be updated on global website.

Home Cinema



* Roger Waters Tour 2013 - "The Wall Live"

Large-Venue

Recommended Applications:

- Rental/Staging
- Auditoriums
- Digital Signage
- Houses of Worship/Churches

Installation

Recommended Applications:

- Seminar Rooms/Lecture Rooms
- Museums/Exhibition
- Corporate Uses
- Digital Signage
- Boardrooms



Portable

Recommended Applications:

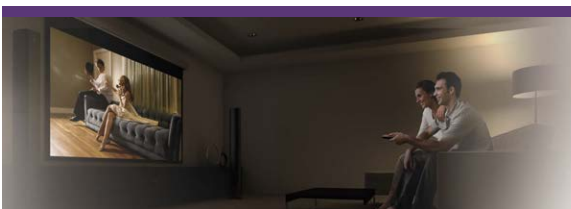
- Medium to Small Classrooms
- Meeting Rooms



Short Throw

Recommended Applications:

- Small Classrooms
- Meeting Rooms



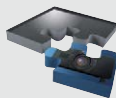
Home Cinema

Recommended Applications:

- Home Theater Rooms
- Living Rooms

Panasonic has considerable experience in providing projectors and professional displays to customers in various businesses. Panasonic is able to consult the right visual solution that meets your need.

For more information about One Stop Visual Solution >> panasonic.net/avc/projector/one_stop



Panasonic®

Weights and dimensions shown are approximate. Specifications and appearance are subject to change without notice. Product availability differs depending on region and country. These products may be subject to export control regulations. Measurement, measuring conditions, and method of notation all comply with ISO 21118 international standards. DLP is a trademark or registered trademark of Texas Instruments. HDMI, the HDMI logo, and High-Definition Multimedia Interface are trademarks or registered trademarks of HDMI Licensing LLC in the United States and other countries. HDBaseT™ is a trademark of the HDBaseT Alliance. All other trademarks are the property of their respective trademark owners. Projection images simulated. © 2014 Panasonic Corporation. All rights reserved.



For more information about Panasonic projectors
 >>> panasonic.net/avc/projector

Panasonic projectors: facebook page
 >>> www.facebook.com/panasonicprojector

Panasonic projectors: YouTube channel
 >>> www.youtube.com/user/PanasonicProjector

All information included here is valid as of May 2014.

LINEUP-G36 Printed in Japan.